



Expanding Your Solutions

Corporate Headquarters
13191 Crossroads Pkwy N., Ste 325
City of Industry, CA 91746
Phone: 800.775.2362
Fax: 626.330.7598

Manufacturing Facilities
City of Industry, CA
Denver, CO
Ft. Worth, TX
Pittsburg, CA

Structural Engineering/Design
1001-A Pittsburgh Antioch Hwy
Pittsburg, CA 94565
Phone: 800.775.2362
Fax: 626.330.7598

Technical Services
13191 Crossroads Pkwy N., Ste 325
City of Industry, CA 91746
Phone: 800.416.2278
Fax: 626.249.5004

SURE-BOARD SERIES 200S-F (FLOOR & FLAT-ROOF) SHEATHING PANELS

Geometric Properties

Sure-Board® for Shear Series 200S-F (Floor & Flat-Roof) panels are 3/4" x 48" x 48" fiber cement panels backed with 33 mil (20 gauge) thick sheet of hot-dipped G40 galvanized steel for use in fire-rated floor sheathing assemblies. Each panel has a 2" overhang of steel to provide for backing at horizontal joints. G60 and G90 coated steel is available upon special request only, and will incur extended lead-times and delivery.

Steel Thickness

Thickness (mil.)	Design Thickness (in.) ¹	Minimum Thickness (in.) ^{1,2}	Yield (KSI)	Panel Sizes (in.)
33	0.0346	0.0329	33	3/4" x 48" x 48"

Notes:

1. Uncoated steel thickness. Thickness is for carbon steel.
2. Minimum Thickness represents 95% of the design thickness and is the minimum acceptable thickness delivered to the job site, based on section A4.3 of the AISI S100-2012

ASTM & Code Standards:

- C1325 (Cement Board)
- ASTM A653/653M, A924/924M & A1003/1003M
- 2012, 2015 IBC
- 2012, 2015 IRC
- 2010/2013 CBC
- IAPMO ER-185
- DSA Approved IR A-5
- UL H503 – UL Fire Test for 1 and 1-1/2 Hour assembly

CEMCO cold-formed steel framing products recycled steel:

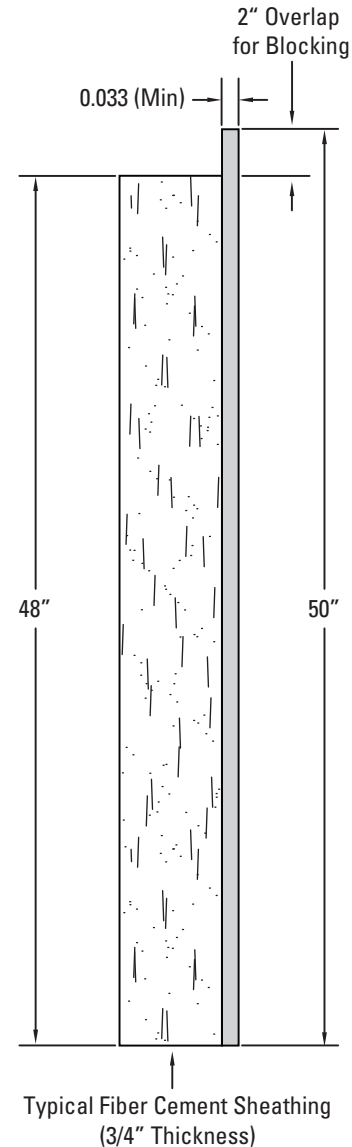
- Total Recycled Content: 36.9%
- Post-Consumer: 19.8%
- Pre-Consumer: 14.4%

LEED v3 for Building and Design Construction:

- MR Credit 2: Construction Waste Management.
- MR Credit 4: Recycled Content.

LEED v4 for Building and Design Construction:

- MR Prerequisite: Construction and Demolition Waste Management Planning.
- MR Credit: Construction and Demolition Waste Management.
- MR Credit: Building Product Disclosure and Optimization – Sourcing of Raw Materials, Option 2.
- MR Credit: Building Product Disclosure and Optimization – Environmental Product Declarations, Options 1 & 2.
- MR Credit: Building Product Disclosure and Optimization – Material Ingredients, Option 1.
- MR Credit: Building Life-Cycle Impact Reduction, Option 4.



Technical Services

Technical Services: 800.416.2278
Structural Engineering/Design: 925.473.9340
www.cemcosteel.com



This technical information reflects the most current information available and supersedes any and all previous publications effective July 31, 2017.

07-31-17 AT