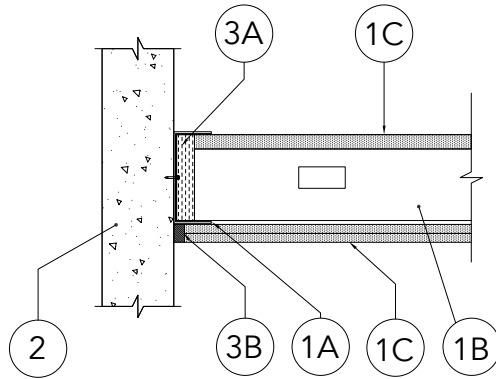


**SYSTEM NO. WW-D-0271**

ANSI/UL2079  
Assembly Ratings – 2 Hr

Nominal Joint Width - See Chart  
Class II or III Movement Capabilities - See Chart

L Rating at Ambient - Less Than 1 CFM/Lin Ft  
L Rating at 400°F - Less Than 1 CFM/Lin Ft



1. **Shaft Wall Assembly** — The 2 hr fire rated gypsum board/stud wall assembly shall be constructed of the materials and in the manner described in the individual U400 or V400 Series Wall and Partition Design in the UL Fire Resistance Directory and shall include the following construction features:
  - A. **Steel Runners** — runner U-shaped, sized to accommodate steel studs (Item 1B), fabricated from 24 ga galv steel. Ceiling runner positioned with slotted leg toward finished side of wall. Runners attached to floor with steel fasteners located not greater than 2 in. from ends and not greater than 24 in OC. The ceiling runners are provided with a fill, void or cavity material and are described in Item 3.
  - B. **Studs** — "C-T", "I", or "C-H" shaped steel studs to be min 2 1/2 in. (64 mm) wide and formed of min 24 ga galv steel. Stud spacing not to exceed 24 in. (610 mm) OC with first stud located max 3-1/4 in. (83 mm) from concrete wall assembly (Item 2)
  - C. **Gypsum Board\*** — 1 in. (25 mm) thick gypsum liner panels and 1/2 in., 5/8 in. or 3/4 in. (13, 16 or 19 mm) thick gypsum panels installed as specified in the individual U400 or V400 Series shaft wall designs in the UL Fire Resistance Directory.

The hourly fire rating of the joint system is equal to the hourly fire rating of the wall.

2. **Wall Assembly** — Min 4-1/2 in. (114 mm) thick steel- reinforced lightweight or normal weight (100-150 pcf or 1600-2400 kg/m3) structural concrete. Wall may also be constructed of any UL Classified Concrete Blocks\* with a minimum thickness of 6 in. (152 mm).

See **Concrete Blocks (CAZT)** category in the Fire Resistance Directory for names of manufacturers.

3. **Joint System** — Max width of joint (at time of installation) is 1/2 in. (13 mm). The joint system is designed to accommodate a max 100 percent compression or extension from its installed width. The joint system consists of the following:
  - A. **Forming Material\*** — Min 2 in. (51 mm) thick min 4 pcf (64 kg/m3) mineral wool batt insulation cut to the width of the ceiling runner and compressed 25 percent in thickness, installed into ceiling runner between leg of track and gypsum liner board.

Item	Product	Max Gap	Movement
3B	FAS Shaft Track 500 (CEMCO)	1/2"	100% Comp or Ext
3B1	Fire Rated J-Track (CEMCO)	1/2"	100% Comp or Ext
3B2	DDA-1 (CEMCO)	1/2"	100% Comp or Ext
3B3	HOTROD XL (CEMCO)	3/4"	80% Comp 33% Ext
3B4	HOTROD Type-X (CEMCO)	3/4"	80% Comp 30% Ext
3B5	HOTROD Type-X (CEMCO)	1/2"	75% Comp 25% Ext

FireRip to be secured to floor with steel masonry anchors spaced a max 24 in. (610cm). Face of steel angle to be in contact with gypsum board on both sides of wall. Butt joints in FireRip to be offset min 12 in. (305mm) on opposite sides of wall.

**\* Indicates such products shall bear the UL or cUL Certification Mark for jurisdictions employing the UL or cUL Certification (such as Canada), respectively.**

**SYSTEM NO. WW-D-0271**

ANSI/UL2079  
Assembly Ratings – 2 Hr

Nominal Joint Width - See Chart  
Class II or III Movement Capabilities - See Chart

L Rating at Ambient - Less Than 1 CFM/Lin Ft  
L Rating at 400°F - Less Than 1 CFM/Lin Ft

The appearance of a company's name or product in this database does not in itself assure that products so identified have been manufactured under UL Solutions' Follow - Up Service. Only those products bearing the UL Mark should be considered to be Certified and covered under UL Solutions' Follow - Up Service. Always look for the Mark on the product.

UL Solutions permits the reproduction of the material contained in Product iQ subject to the following conditions: 1. The Guide Information, Assemblies, Constructions, Designs, Systems, and/or Certifications (files) must be presented in their entirety and in a non-misleading manner, without any manipulation of the data (or drawings). 2. The statement "Reprinted from Product iQ with permission from UL Solutions" must appear adjacent to the extracted material. In addition, the reprinted material must include a copyright notice in the following format: "©2024 UL LLC."



Reproduced Courtesy of Underwriters Laboratories, Inc.  
Created or Revised: May 20, 2021

CEMCO® | P: (800) 775-2362 | F: (626) 330-7598 | [www.cemcosteel.com](http://www.cemcosteel.com)

