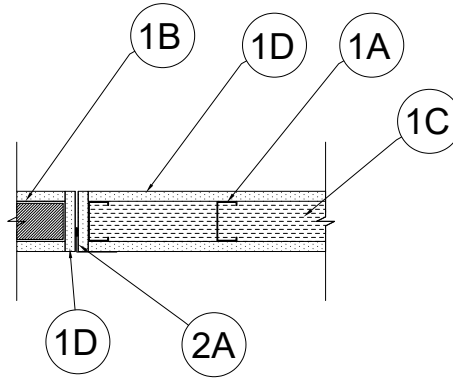


## WW-D-0182

ANSI/UL2079  
Assembly Ratings - 1 and 2 Hr

Nominal Joint Width – 1/4"  
Class II or III Movement Capabilities - +/- 1/2" shear  
movement, in and out of the plane of the wall

L Rating at Ambient - Less Than 1 CFM/Lin Ft  
L Rating at 400°F - Less Than 1 CFM/Lin Ft



1. **Wall Assembly** — The 1 hr fire-rated gypsum board/stud wall assembly shall be constructed of the materials and in the manner described in the individual U400, V400 or W400 Series Wall and Partition Design in the UL Fire Resistance Directory and shall include the following construction features:
  - A. **Studs** — Steel studs to be min 3-1/2 in. (89 mm) wide. Stud spacing not to exceed 24 in. (610 mm) OC.
  - B. **Aluminum Framing** — Immediately adjacent to a stud (Item 1A) on one side of the wall-wall joint assembly a rectangular tubing mullion shall be min 2-1/2 in. (64 mm) wide by 4-1/2 in. (114 mm) deep and shall be formed from min 0.125 in. (3.2 mm) thick aluminum.
  - C. **Batts and Blankets\*** — Glass fiber or mineral wool batt insulation placed to fill stud cavity. Glass fiber insulation to have a min density of 0.9 pcf (14 kg/m<sup>3</sup>) and a min R-13 thermal insulation rating. Mineral wool batt insulation to have a min density of 3 pcf (48 kg/m<sup>3</sup>). See Batts and Blankets (BKNV) Category in the Building Materials Directory and Batts and Blankets (BZIZ) Category in the Fire Resistance Directory for names of Classified Companies.
  - D. **Gypsum Board\*** — Gypsum board sheets installed to a min total thickness of 5/8 in. (16 mm) on each side of wall. Wall to be constructed as specified in the individual Wall and Partition Design in the UL Fire Resistance Directory. The inside of the opening on the stud wall side is to be lined min total thickness of 5/8 in. (16 mm) of gypsum board. After installation of c aluminum framing member (Item 1B), a layer of gypsum board to be installed covering framing member (Item 1B) on the three exposed sides in accordance with the rated wall assembly. A maximum 1/4 in. (6 mm) gap shall be maintained between the gypsum board wall and the finished curtain wall framing member.
2. **Joint System** — Max separation between the gypsum board walls is 1/4 in. (6 mm). The joint is designed for 1/2 in. (13 mm) sheer movement in and out of the plane of the wall. The joint system consists of the following:
  - A. **Fill, Void or Cavity Material\*** — Min 25 ga L-shaped angle having a 1-1/4 in. (32 mm) leg and 2-1/2 in. (64 mm) leg with two nominal 1/2 in. (13 mm) wide intumescent strips attached on both sides at the end of the leg. Angle is to be attached to the finished gyp wall with steel fasteners spaced max 8 in. (203 mm) on center.

**CALIFORNIA EXPANDED METAL PRODUCTS CO** — FAS Vertical Drift Joint

**\* Indicates such products shall bear the UL or cUL Certification Mark for jurisdictions employing the UL or cUL Certification (such as Canada), respectively.**

The appearance of a company's name or product in this database does not in itself assure that products so identified have been manufactured under UL's Follow-Up Service. Only those products bearing the UL Mark should be considered to be Certified and covered under UL's Follow-Up Service. Always look for the Mark on the product.

UL permits the reproduction of the material contained in the Online Certification Directory subject to the following conditions: 1. The Guide Information, Assemblies, Constructions, Designs, Systems, and/or Certifications (files) must be presented in their entirety and in a non-misleading manner, without any manipulation of the data (or drawings). 2. The statement "Reprinted from the Online Certifications Directory with permission from UL" must appear adjacent to the extracted material. In addition, the reprinted material must include a copyright notice in the following format: "© 2021 UL LLC"