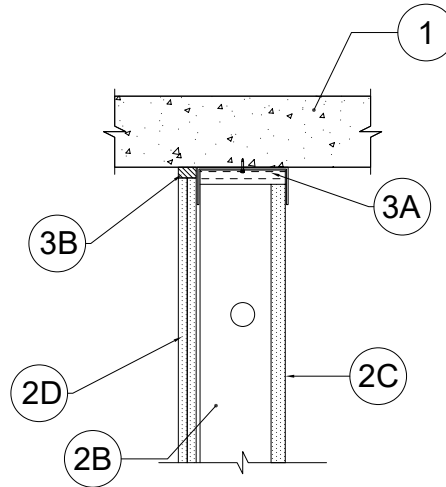


HW-D-0585

ANSI/UL2079
Assembly Ratings - 2 Hr

Nominal Joint Width - See Chart
Class II or III Movement Capabilities - See Chart

L Rating at Ambient - 2.1 CFM/lin ft or Less
Than 1 CFM/Lin Ft (See Item 3B.1)
L Rating at 400°F - 1.3 CFM/lin ft or Less Than
1 CFM/Lin Ft (see Item 3B.1)



1. **Floor Assembly** — Concrete — Min 4-1/2 in. (114 mm) thick reinforced concrete.
2. **Shaft Wall Assembly** — The 2 hr fire rated gypsum board/stud wall assembly shall be constructed of the materials and in the manner described in the individual U400 or V400 Series Wall and Partition Design in the UL Fire Resistance Directory and shall include the following construction features:
 - A. **Steel Floor and Ceiling Runners** — Floor runner U-shaped, sized to accommodate steel studs (Item 2B), fabricated from min 24 ga galv steel. Runners attached to floor with steel fasteners located not greater than 2 in. from ends and not greater than 24 in OC. Flange height of ceiling runners shall be min 1/4 in. (6 mm) greater than max extended joint width. The ceiling runners are provided with a fill, void or cavity material and are described in Item 3.
 - A1. **Light Gauge Framing* — Slotted Ceiling Track** — (Not Shown) - As an alternate to the Item 3B, a ceiling track consisting of galv steel channel with slotted flanges may be used when Item 3B.1 or 3B.2 is utilized. Slotted ceiling track sized to accommodate steel "C-T", "I" or "C-H" studs (Item 2C). Attached to steel deck with steel fasteners or welds spaced max 24 in. (610 mm) OC.

BRADY CONSTRUCTION INNOVATIONS INC, DBA SLIPTRACK SYSTEMS — SLP-TRK
CALIFORNIA EXPANDED METAL PRODUCTS CO — CST

 - B. **Studs** — "C-T", "I", or "C-H" shaped steel studs to be min 2 1/2 in. (64 mm) wide and formed of min 24 ga galv steel. Studs cut 2-2-1/4 (51 to 57mm) less in length than assembly height with bottom nesting in and secured to floor runner. Studs spaced max 24 in. (610 mm) OC.
 - C. **Gypsum Board*** — 1 in. (25 mm) thick by max 24 in. (610 mm) wide gypsum board liner panels. Panels cut 1-1/4 to 1-1/2 in. (32 to 38 mm) less in length than floor to ceiling height. Vertical edges inserted into "T" shaped section of "C- T" studs, into holding tabs of "I" studs or into "H"-shaped section of "C-H" studs. A nominal 3-5/8 in. (92 mm) wide rip of gypsum board covering the leg of the ceiling runner attached a max of 3/8 in. (10 mm) below the track web and a max of 8 in. (203 mm) O.C. to ceiling runner on the non-finished side of wall. When 3B.1 is used, no 3-5/8 in. (92 mm) wide rip of gypsum board is required on the leg of the ceiling runner.
 - D. **Gypsum Board*** — Gypsum board 1/2 or 5/8 in. (13 or 16 mm) thick, applied on finished side of wall as specified in the individual Wall and Partition Design. The boards cut a max 1-1/4 to 1-1/2 in. (32 to 38 mm) less in length than the floor to ceiling height. The screws attaching the gypsum board layer(s) to the "C-T", "I", or "C-H" studs shall be located between 4 and 5 in. (102 -127 mm) down from ceiling surface.
3. **Joint System** — Max separation between bottom of floor and top of gypsum board (at time of installation) is 7/8 in. (22 mm) or 1-1/16 in. (27 mm). When Item 3B.1 is used the maximum separation between the bottom the floor and the top of the gypsum board (at time of installation) is 7/8 in. (22 mm). When Item 3B.2 is used the maximum separation between the bottom the floor and the top of the gypsum board (at time of installation) is 1/2 in. (13 mm). The joint system is designed to accommodate a max 94 percent compression or 100 percent extension from its installed width.

HW-D-0585

ANSI/UL2079
Assembly Ratings - 2 Hr

Nominal Joint Width - See Chart
Class II or III Movement Capabilities - See Chart

L Rating at Ambient - 2.1 CFM/lin ft or Less
Than 1 CFM/Lin Ft (See Item 3B.1)
L Rating at 400°F - 1.3 CFM/lin ft or Less Than
1 CFM/Lin Ft (see Item 3B.1)

- A. **Forming Material*** — Min 2 in. thick min 4 pcf (64 kg/m³) mineral wool batt insulation cut to friction fit 33 percent compression in width and installed into ceiling runner between leg of track and gypsum liner board.

Item	Product	Max Gap	Movement
3B	DDA (CEMCO)	7/8"	94% Comp 100% Ext
3B1	DDA-1 (CEMCO)	1/2"	94% Comp 100% Ext
3B2	Fire Gasket 0.5 (CEMCO, MARINO/WARE, TRIM-TEX)	1/4"	100% Comp 100% Ext
3B2	Fire Gasket 0.5 (CEMCO, MARINO/WARE, TRIM-TEX)	1/2"	100% Comp only
3B3	Fire Gasket 1.0 (CEMCO, MARINO/WARE, TRIM-TEX)	1/2"	100% Comp 100% Ext
3B3	Fire Gasket 1.0 (CEMCO, MARINO/WARE, TRIM-TEX)	1"	100% Comp only
3B4	Fire Gasket 1.5 (CEMCO, MARINO/WARE, TRIM-TEX)	3/4"	100% Comp 100% Ext
3B4	Fire Gasket 1.5 (CEMCO, MARINO/WARE, TRIM-TEX)	1-1/2"	100% Comp only
3C	FireRip-2 (CEMCO)	1"	94% Comp 100% Ext
		2"	94% Comp 0% Ext

*** Indicates such products shall bear the UL or cUL Certification Mark for jurisdictions employing the UL or cUL Certification (such as Canada), respectively.**

The appearance of a company's name or product in this database does not in itself assure that products so identified have been manufactured under UL's Follow-Up Service. Only those products bearing the UL Mark should be considered to be Certified and covered under UL's Follow-Up Service. Always look for the Mark on the product.

UL permits the reproduction of the material contained in the Online Certification Directory subject to the following conditions: 1. The Guide Information, Assemblies, Constructions, Designs, Systems, and/or Certifications (files) must be presented in their entirety and in a non-misleading manner, without any manipulation of the data (or drawings). 2. The statement "Reprinted from the Online Certifications Directory with permission from UL" must appear adjacent to the extracted material. In addition, the reprinted material must include a copyright notice in the following format: "© 2021 UL LLC"



Reproduced Courtesy of Underwriters Laboratories, Inc.
Created or Revised: July 19, 2022

CEMCO® | P: (800) 775-2362 | F: (626) 330-7598 | www.cemcosteel.com

Page 2 of 2



HW-D-0585