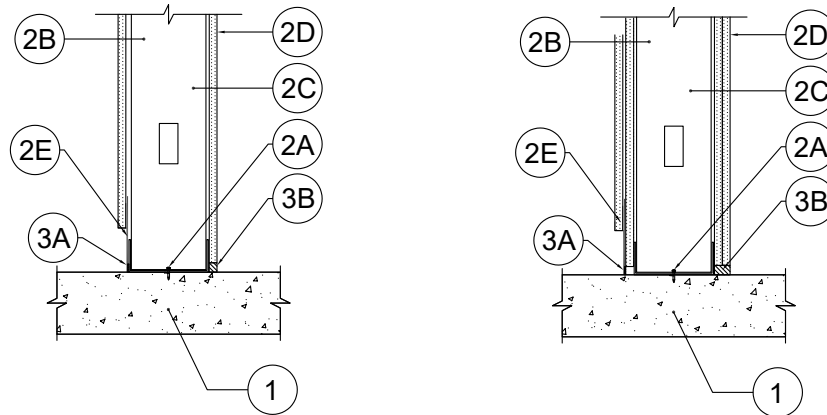


SYSTEM NO. BW-S-0036

ANSI/UL2079
Assembly Ratings - 1 and 2 Hr

Nominal Joint Width - See Chart, Section 3

L Rating at Ambient - Less Than 1 CFM/Lin Ft
L Rating at 400°F - Less Than 1 CFM/Lin Ft



1. **Floor Assembly** — Min 4-1/2 in. (114 mm) thick reinforced lightweight or normal weight (100-150 pcf or 1600-2400 kg/m³) structural concrete. Floor may also be constructed of any min 6 in. (152 mm) thick UL Classified hollow-core **Precast Concrete Units***.

See **Precast Concrete Units** Category in the Fire Resistance Directory for names of manufactures.

2. **Wall Assembly** — The 1 or 2 hr fire rated gypsum board/steel stud wall assembly shall be constructed of the materials and in the manner specified in the individual U400, V400 or W400 Series Wall and Partition Design in the UL Fire Resistance Directory. In addition, the wall may incorporate a head-of-wall joint system constructed as specified in the HW Series Joint Systems in the UL Fire Resistance Directory. The wall shall include the following construction features:

- A. **Steel Floor Runner** — Floor runners are min. 25 ga track. Runners secured with steel fasteners spaced 24 in. (610 mm) OC.
- B. **Studs** — Steel studs to be min 3-5/8 in. (89 mm) wide. Studs cut 1/2 to 3/4 in. (13 to 19 mm) less in length than assembly height with bottom nesting in, resting on and fastened to floor runner with typical steel fasteners. Stud spacing not to exceed 24 in. (610 mm) OC.
- C. **Batts and Blankets*** — Glass fiber or mineral wool batt insulation placed to fill stud cavity. Glass fiber insulation to have a min density of 0.9 pcf (14 kg/m³) and a min R-13 thermal insulation rating. Mineral wool batt insulation to have a min density of 3 pcf (48 kg/m³).

See **Batts and Blankets** (BKNV) Category in the Building Materials Directory and Batts and Blankets (BZJZ) Category in the Fire Resistance Directory for names of Classified Companies.

- D. **Gypsum Board*** — Gypsum board installed to a min total thickness of 5/8 in. (16 mm) or 1-1/4 (32 mm) on each side of wall for a 1 or 2 hr fire rated wall respectively. A max 1/2 in. (13 mm) gap shall be maintained between the bottom of the gypsum board and the top of the concrete floor. For two hour wall consecutions the inner layer of gypsum to extend to the floor behind the FAS-RBR-Strap (Item 3A).
- E. **Base Board** — Max 4 in. (102 mm) high solid wood or aluminum based board reveal.

3. **Joint System** — Max width of joint is 1/2 in. (13 mm) on the non-finished side of the wall. The max width of the joint is 4 in. on the side of the wall with the reveal measured from the slab to the bottom of the gypsum. Joint is eligible for 2 hour rating only when item 3A1 is used. The joint system shall consist of the following:

Item	Product	Max Gap ¹
3A	FAS RBR Strap (CEMCO, MARINO/WARE)	4"
3B*	Metacaulk 1200 (RECTORSEAL)	1/2"

¹ - on non-reveal side

² - side of wall with reveal (measured from slab to bottom of gyp board)

* Indicates such products shall bear the UL or cUL Certification Mark for jurisdictions employing the UL or cUL Certification (such as Canada), respectively.

SYSTEM NO. BW-S-0036

ANSI/UL2079
Assembly Ratings - 1 and 2 Hr

Nominal Joint Width - See Chart, Section 3

L Rating at Ambient - Less Than 1 CFM/Lin Ft
L Rating at 400°F - Less Than 1 CFM/Lin Ft

The appearance of a company's name or product in this database does not in itself assure that products so identified have been manufactured under UL's Follow-Up Service. Only those products bearing the UL Mark should be considered to be Certified and covered under UL's Follow-Up Service. Always look for the Mark on the product.

UL permits the reproduction of the material contained in the Online Certification Directory subject to the following conditions: 1. The Guide Information, Assemblies, Constructions, Designs, Systems, and/or Certifications (files) must be presented in their entirety and in a non-misleading manner, without any manipulation of the data (or drawings). 2. The statement "Reprinted from the Online Certifications Directory with permission from UL" must appear adjacent to the extracted material. In addition, the reprinted material must include a copyright notice in the following format: "© 2021 UL LLC"



Reproduced Courtesy of Underwriters Laboratories, Inc.
Created or Revised: July 13, 2021

CEMCO® | P: (800) 775-2362 | F: (626) 330-7598 | www.cemcosteel.com

