

FLUTED METAL DECK WITH
CONCRETE FILL

FIREPROOFING OR
MINERAL WOOL

TYPICAL STEEL
FASTENERS BY DESIGN

1/2" x 20 GA. Z-BAR OR
16 GA. CRC BY DESIGN

CEMCO FAS
TRACK 1000

DRYWALL SCREW
1" LOWER THAN
TRACK LEG

STEEL BEAM

STRUCTURAL STEEL
FIREPROOFING
(THICKNESS BY OTHERS)

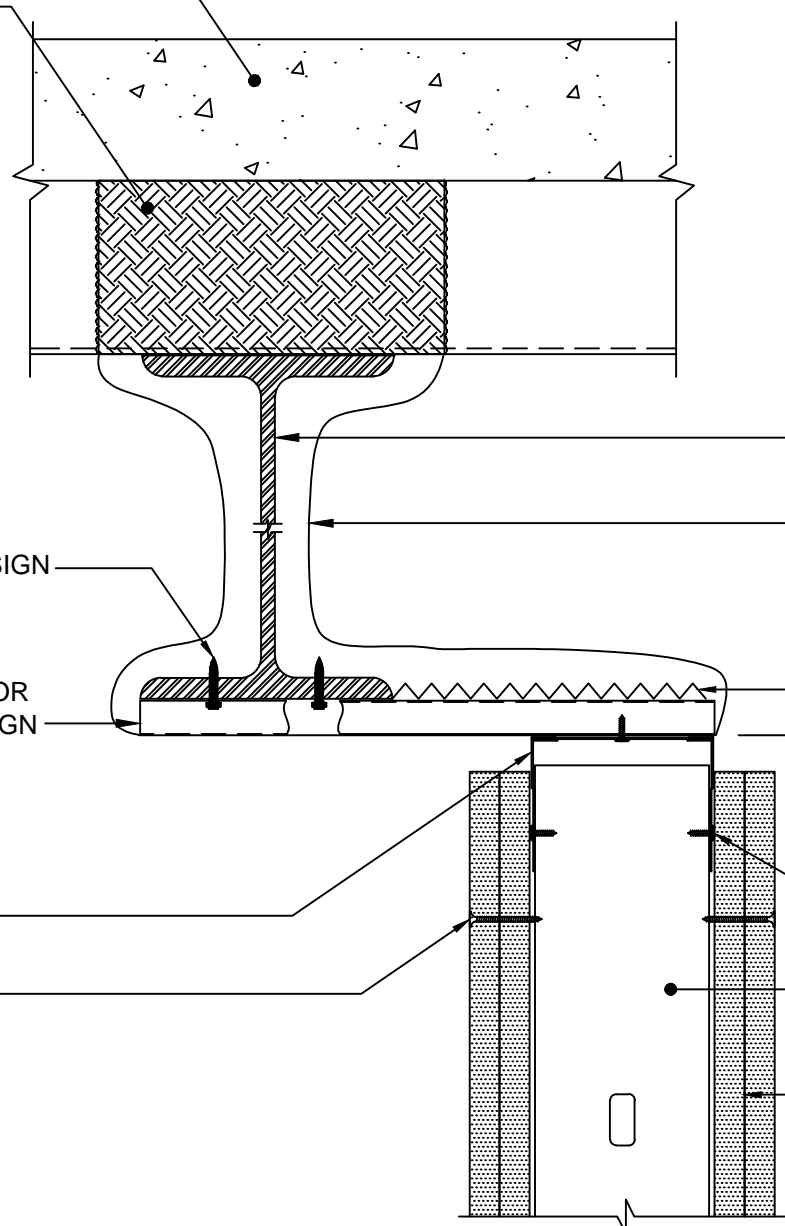
3.4 EXPANDED
RIB LATH

3/4" JOINT
PROTECTION

#8 x 1/2" FRAMING
SCREW

METAL STUD
BY DESIGN

5/8" TYPE
"X" DRYWALL



HW-D-0652

STANDARD WALL, CANTILEVERED UNDER BEAM

ASSEMBLY RATING: 2 HR



WWW.CEMCOSTEEL.COM

263 N. Covina Lane.
City of Industry, CA 91744
PHONE (800) 775-2362
ENG. DEPT.
FAX (626) 369-7243
WWW.CEMCOSTEEL.COM

DISCLAIMER:

CEMCO assumes no liability for failure resulting from the use of it's drawings, computations, or for failure resulting from the use of alternate materials, or improper application or installation. This drawing is supplied solely to assist in the selection and application of CEMCO products. This drawing is generic in nature and should not be used in design or construction without an independent evaluation by a qualified Architect or Engineer of Record. All warranties of any kind, express or implied, including but not limited to the implied warranties of merchantability and fitness for a particular purpose are disclaimed.

REVISION:

DRAWN BY: T.GARIBEKIAN
DATE: 11/09/19
APPROVED BY: F. SESMA
DATE: 11/09/19
SCALE: 3"= 1'-0"
JOB NO.: UL DETAILS
SHEET NO.:

SD54