

FLUTED METAL DECK
FILLED WITH CONCRETE

MINERAL
WOOL

TYPICAL STEEL
FASTENERS BY DESIGN

3/4" JOINT
PROTECTION

#8 x 1/2" FRAMING
SCREW

DRYWALL SCREW
1" LOWER THAN
TRACK LEG

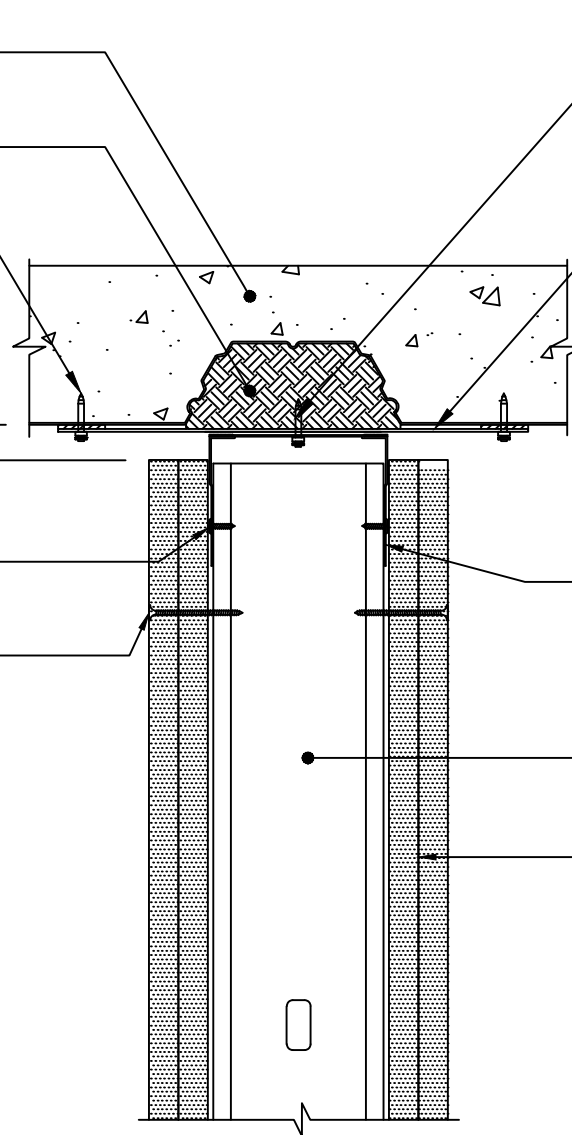
MIN. #6 FRAMING
SCREW BY DESIGN

2" STRAP BY DESIGN

CEMCO
FAS TRACK 1000

METAL STUD
BY DESIGN

5/8" TYPE "X"
DRYWALL



HW-D-0524

ASSEMBLY RATING: 2 HR

STANDARD WALL, PARALLEL & DIRECTLY UNDER DECK FLUTE
CONFIGURATION "B"

DISCLAIMER:

CEMCO assumes no liability for failure resulting from the use of its drawings, computations, or for failure resulting from the use of alternate materials, or improper application or installation. This drawing is supplied solely to assist in the selection and application of CEMCO products. This drawing is generic in nature and should not be used in design or construction without an independent evaluation by a qualified Architect or Engineer of Record. All warranties of any kind, express or implied, including but not limited to the implied warranties of merchantability and fitness for a particular purpose are disclaimed.

REVISION:

DRAWN BY: T.G
DATE: 11/09/19

APPROVED BY: F. SESMA
DATE: 11/09/19

SCALE: 3" = 1'-0"

JOB NO.: UL DETAILS

SHEET NO.:

SD52



WWW.CEMCOSTEEL.COM

263 N. Covina Lane.
City of Industry, CA 91744
PHONE (800) 775-2362
ENG. DEPT.
FAX (626) 369-7243
WWW.CEMCOSTEEL.COM