

CAP OPENING SIDE OF JAMB W/CEMCO TRACK EXTENDED 6" ABOVE AND BELOW SILL (BY DESIGN)

SCREW ATTACH AT EACH FLANGE (BY DESIGN)

SECTION OF CEMCO STUD ATTACHED TO JAMB WITH SCREWS (SCREW SIZE & QUANTITY BY DESIGN)

CEMCO BACK-TO-BACK JAMB STUDS

SIMPSON CLIP OR EQUIVALENT (BY DESIGN)

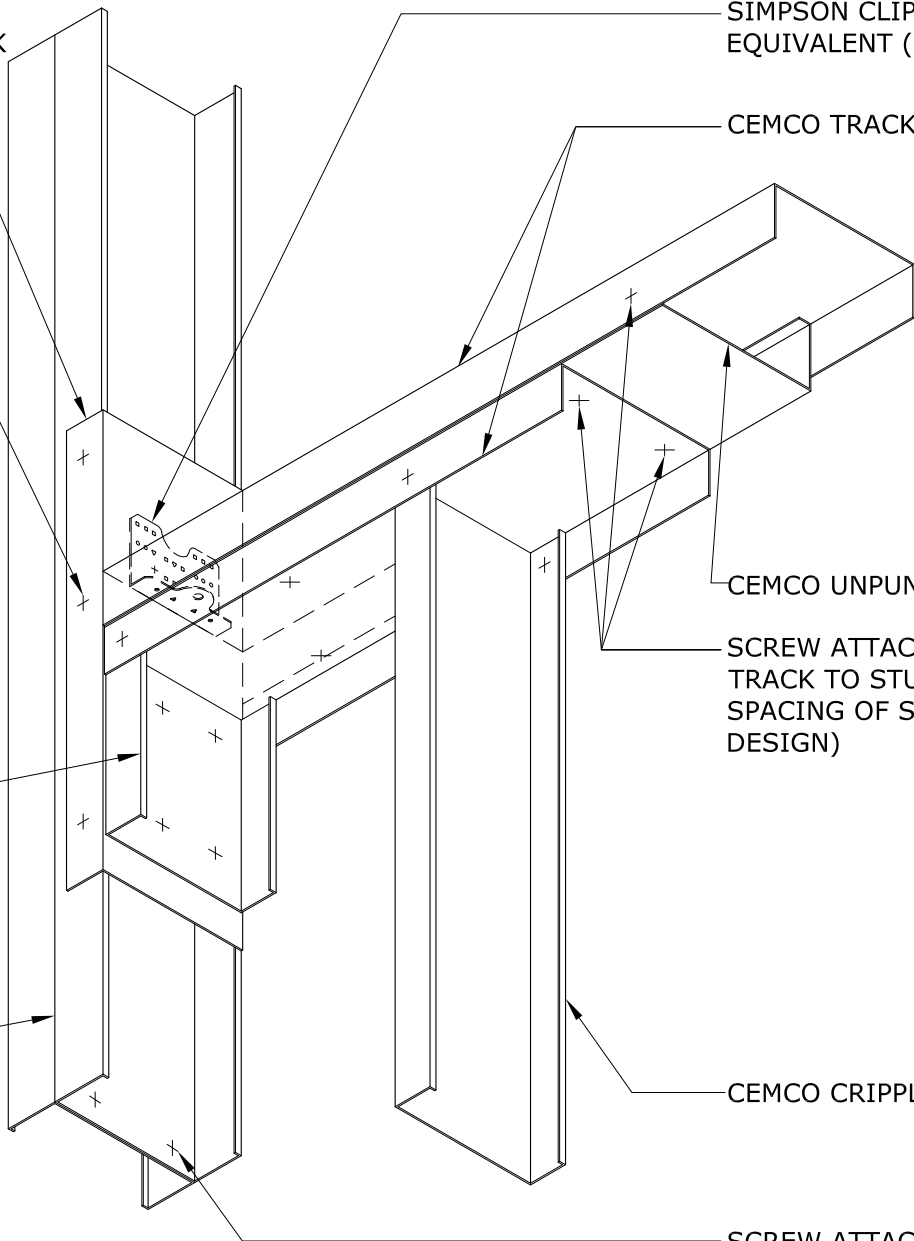
CEMCO TRACKS

CEMCO UNPUNCHED STUD

SCREW ATTACH EACH TRACK TO STUD (SIZE & SPACING OF SCREW BY DESIGN)

CEMCO CRIPPLE STUD

SCREW ATTACH (SCREW SIZE AND SPACING BY DESIGN)



21 **LARGE OPENING BOXED SILL**

SCALE: N.T.S.



ENGINEERING

1001-A PITTSBURG ANTIOCH HWY
 PITTSBURG, CA 94565
 ENG. DEPT. 925.473-9340
 FAX 925.473.9124
 www.cemcosteel.com

DISCLAIMER:

CEMCO assumes no liability for failure resulting from the use of it's drawings, or for failure resulting from the use of alternate materials, or improper application or installation. This drawing is supplied solely to assist in the selection and application of CEMCO products. This drawing is generic in nature and should not be used in design or construction without an independent evaluation by a qualified Architect or Engineer of Record.

CATEGORY:

LOAD-BEARING WALL DETAILS

REV: 1
 RELEASE: 11/21/2019