

XHBN.HW-D-0620 - Joint Systems

Design/System/Construction/Assembly Usage Disclaimer

- Authorities Having Jurisdiction should be consulted in all cases as to the particular requirements covering the installation and use of UL Certified products, equipment, system, devices, and materials.
- Authorities Having Jurisdiction should be consulted before construction.
- Fire resistance assemblies and products are developed by the design submitter and have been investigated by UL for compliance with applicable requirements. The published information cannot always address every construction nuance encountered in the field.
- When field issues arise, it is recommended the first contact for assistance be the technical service staff provided by the product manufacturer noted for the design. Users of fire resistance assemblies are advised to consult the general Guide Information for each product category and each group of assemblies. The Guide Information includes specifics concerning alternate materials and alternate methods of construction.
- Only products which bear UL's Mark are considered Certified.

XHBN - Joint Systems XHBN7 - Joint Systems Certified for Canada

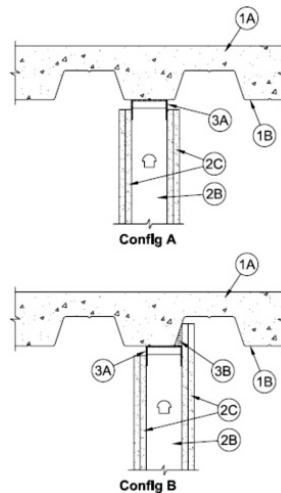
[See General Information for Joint Systems](#)

[See General Information for Joint Systems Certified for Canada](#)

System No. HW-D-0620

June 08, 2020

ANSI/UL2079	CAN/ULC S115
Assembly Ratings — 1 and 2 Hr (See Item 2)	F Ratings — 1 and 2 Hr (See Item 2)
Nominal Joint Width — 3/8, 1/4, 1/2, 5/8, 3/4, 1 In. (See Item 2 and 3)	FT Ratings — 1 and 2 Hr (See Item 2)
Class II or III Movement Capabilities — 80% Compression and or 30% Extension or 100 % Compression and Extension (See Item 3)	FH Ratings — 1 and 2 Hr (See Item 2)
	FTH Ratings — 1 and 2 Hr (See Item 2)
L Rating At Ambient — Less Than 1 CFM/Lin Ft	Nominal Joint Width — 6, 10, 13, 16, 19, 25 mm (see Item 2 and 3)
L Rating At 400°F — Less Than 1 CFM/Lin Ft	Class II or III Movement Capabilities — 80% Compression and or 30% Extension or 100% Compression and Extension (See Item 3)
	L Rating At Ambient — Less Than 1.55 L/s/m
	L Rating At 203°C — Less Than 1.55 L/s/m



1. Floor Assembly — The fire-rated fluted steel deck/concrete floor assembly shall be constructed of the materials and in the manner described in the individual D900 Series Floor-Ceiling Design in the UL Fire Resistance Directory and shall include the following construction features:
A. Steel floor and Form Units* — Max 3 in. deep galv steel fluted floor units.

B. Concrete — Min 2-1/2 in thick reinforced normal or lightweight concrete, as measured from the top plane of the floor units.

2. Wall Assembly — The 1 or 2 hr fire rated gypsum board/stud wall assembly shall be constructed of the materials and in the manner described in the individual U400 or V400 Series Wall and Partition Design in the UL Fire Resistance Directory. The wall is to be constructed in parallel to the flutes of the deck and centered under the valley of the deck and shall include the following construction features:

A. Steel Floor and Ceiling Runners — Floor runners of wall assembly shall consist of min No. 25 ga galv steel channels sized to accommodate steel studs (Item 2B). Legs are to be min 1/4 in. (6 mm) longer than the maximum joint width. Floor runner to be provided with min 1-1/4 in. (32mm) legs. Ceiling runners are provided with a fill, void or cavity material and are described in Item 3A.

A.1. Light Gauge Framing* — Slotted Ceiling Track — (Not Shown) - As an alternate to the Item 2A, a ceiling track consisting of galv steel channel with slotted flanges may be used when Item 3A or Item 3A.1 fill material is utilized. Slotted ceiling track sized to accommodate steel studs (Item 2B). Legs are to be min 1/4 in. (6 mm) longer than the maximum joint width. Attached to steel deck with steel fasteners or welds spaced max 24 in. (610 mm) OC.

BRADY CONSTRUCTION INNOVATIONS INC, DBA SLIPTRACK SYSTEMS — SLP-TRK

CALIFORNIA EXPANDED METAL PRODUCTS CO — CST, CST 325

MARINO/WARE, DIV OF WARE INDUSTRIES INC — Type SLT

B. Studs — Steel studs to be min 3 5/8 in. (92 mm) wide. Studs cut 5/8 to 3/4 in. (16 to 19 mm) or 1-1/4 to 1-1/2 in. (32 to 38 mm) less in length than assembly height for the 5/8 in. or 1 in. (16 or 25 mm) nominal joint width, respectively, with bottom nesting in and secured to floor runner. Steel studs nested in non-slotted ceiling runner without attachment or secured to slotted ceiling runner with No. 8 by 1/2 in. (13 mm) long wafer head steel screws at mid-height of exposed slot.

B1. Framing Members - Steel Studs* — In lieu of Item B - Proprietary channel shaped studs, 3-5/8 in. wide spaced a max of 24 in. OC. Studs to be cut 5/8 to 3/4 in (16 to 19 mm) or 1-1/4 to 1-1/2 in. (32 to 38 mm) less in length than assembly height for the 5/8 in. or 1 in. (16 or 25 mm) nominal joint width, respectively, with bottom nesting in and secured to floor runner. For direct attachment of gypsum board only. Steel studs nested in non-slotted ceiling runner without attachment or secured to slotted ceiling runner with No. 8 by 1/2 in. (13 mm) long wafer head steel screws at mid-height of exposed slot.

CALIFORNIA EXPANDED METAL PRODUCTS CO — ViperStud™

MARINO/WARE, DIV OF WARE INDUSTRIES INC — ViperStud™

C. Gypsum Board* — Gypsum board sheets installed to a min total 5/8 in. (16 mm) or 1 1/4 in. (32 mm) thickness — on each side of wall for 1 and 2 hr fire rated assemblies, respectively. Wall to be constructed as specified in the individual U400 or V400 Series Design in the UL Fire Resistance Directory except that a max 5/8 in. (16 mm) or 1 in. (25 mm) gap shall be maintained between the top of the gypsum board and the bottom of the floor assembly for the 5/8 in. or 1 in. (16 or 25 mm) joint, respectively. The screws attaching the gypsum board to the studs along the top of the wall shall be located 4 to 5 in. (102 to 127 mm) down from deck at time of installation. No gypsum board attachment screws shall be driven into the ceiling runner.

The hourly fire rating of the joint system is equal to the hourly fire rating of the wall.

3. Joint System — Max separation between bottom of floor and top of gypsum board (at time of installation) is 3/8, 1/2, 5/8 in. 3/4 (16 to 19 mm). The joint system is designed to accommodate a max 80 percent compression and or 30 percent extension from its installed width. When item 3A.1 is used max nominal width is 1/2 in. (13 mm). When item 2A.1 is used max nominal width is 3/4 in. (19 mm). When Item 3A2 is used the joint will accommodate 100 percent compression and extension from nominal 3/8 in. (10 mm) installed width. When item 3A8 is used the joint will accommodate 100% compression/extension for nominal 1/4 in. (6mm) gaps or compression only for 1/2 in. (12mm) gaps.

A. Fill, Void or Cavity Material* — Min 20 ga steel channel track with 2, 2-3/4 in. or 3 in (51, 70 or 76 mm) legs with or without slots having nom 1/2 in. (13 mm) wide intumescent strips affixed to the top web along the outer corner on both sides and sized to accommodate steel studs. Track attached to concrete deck with steel fasteners or welds spaced max 24 in. (610 mm) OC.

CALIFORNIA EXPANDED METAL PRODUCTS CO — FAS Track 1000, FAS Track 1000DL

A1. **Fill, Void or Cavity Material*** — Min 25 ga composite steel angle with one 5/8 in. (16 mm) leg and one 2-1/2 in (64 mm) leg with a 5/8 in. (16 mm) strip of intumescent strip affixed along the inside 2-1/2 in (64 mm) leg. Steel angle is friction fit between the top web of the ceiling runner and the concrete deck.

CALIFORNIA EXPANDED METAL PRODUCTS CO — DDA (Deflection Drift Angle)

A2. **Fill, Void or Cavity Material*** — As an option to item 3A a min 25 ga composite steel angle with one 5/8 in. (16 mm) leg and one 1-1/4 in (32 mm) leg with a strip of intumescent strip affixed along the inside 1-1/4 in (32 mm) leg. Steel angle is friction fit between the top web of the ceiling runner and the concrete deck.

CALIFORNIA EXPANDED METAL PRODUCTS CO — DDA-1 (Deflection Drift Angle)

A3. **Fill, Void or Cavity Material*** — (Not Shown) - As an alternate to item 3A for nominal 3/4 in. (19 mm) gap 80% compression and 30% extension between the edge of the drywall and the floor/ceiling assembly shall be filled with vinyl deflection bead with 5/16 in. (8 mm) intumescent strip and foam applied to horizontal leg that runs above the edge of the drywall. The perforated leg may be attached to the surface of the drywall with 1/2 in. (13 mm) staples every 6-8 in. (152-203 mm).

CALIFORNIA EXPANDED METAL PRODUCTS CO — HOTROD XL

MARINO/WARE, DIV OF WARE INDUSTRIES INC — HOTROD XL

A4. **Fill, Void or Cavity Material*** — (Not Shown) - As an alternate to item 3A for nominal joint 3/4 in. (19 mm) 80% compression and 30% extension. Nominal 1 in. (25.4 mm) open cell foam plug having a nominal 5/16 in. (8 mm) intumescent tape applied to the top surface of the foam profile. The foam is sized for 1 or 2 hour walls and shall be placed in the joint above the top edge of the drywall between the concrete slab. A layer of tape and joint compound can then be applied over the HOTROD Type X assembly.

CALIFORNIA EXPANDED METAL PRODUCTS CO — HOTROD Type-X

A5. **Fill, Void or Cavity Material*** — (Not Shown) - As an alternate to item 3A for 1/2 in. (13 mm) nominal gap 75% compression and 25% extension 1 in. (25.4 mm) open cell foam plug having a nom 5/16 in. (8 mm) intumescent tape applied to the top surface of the foam profile. The foam is sized for 1 or 2 hour walls and shall be placed in the joint above the top edge of the drywall between the floor/ceiling assembly.

CALIFORNIA EXPANDED METAL PRODUCTS CO — HOTROD Type-X

A6. **Fill, Void or Cavity Material*** — (Not Shown) - For nominal 1/2 in. (12 mm) gaps 100% compression/ extension or 1 in. (25 mm) compression only. As an alternate to DDA-1 (Item A1) a composite corrugated vinyl profile with a 1-1/2 in. (38 mm) wide leg and a 3/8 in. (10 mm) bubble gasket along the upper edge. A 5/8 in. (16 mm) wide intumescent strip affixed along the inside 1-1/2 in. (38 mm) leg. Composite vinyl profile is attached to the leg of the ceiling runner/track with 1/2 in. (13 mm) No. 8 framing screws or adhesively attached with double sided foam tape.

CALIFORNIA EXPANDED METAL PRODUCTS CO — Fire Gasket 1

MARINO/WARE, DIV OF WARE INDUSTRIES INC — Fire Gasket 1

TRIM-TEX INC — Trim Tex-Fire Gasket 1

A7. **Fill, Void or Cavity Material*** — (Not Shown) - For nominal 3/4 in. (19 mm) gaps 100% compression/extension or 1-1/2 in. (38 mm) compression only. As an alternate to DDA-1 (Item A1) a composite corrugated vinyl profile with a 2 in. (50 mm) wide leg and a 3/8 in. (10 mm) bubble gasket along the upper edge. A 1 in. (25 mm) wide intumescent strip affixed along the inside 1-1/2 in. (38 mm) leg. Composite vinyl profile is attached to the leg of the ceiling runner/track with 1/2 in. (13 mm) No. 8 framing screws or adhesively attached with double sided foam tape.

CALIFORNIA EXPANDED METAL PRODUCTS CO — Fire Gasket 1.5

MARINO/WARE, DIV OF WARE INDUSTRIES INC — Fire Gasket 1.5

TRIM-TEX INC — Trim Tex-Fire Gasket 1.5

A8. **Fill, Void or Cavity Material*** — (Not Shown) - For nominal 1/4 in. (6mm) gaps 100% compression/ extension or 1/2 in. (12mm) compression only. As an alternate to DDA-1 (Item A2) a composite corrugated vinyl profile with a 1-1/8 in. (28 mm) wide leg and a 1/4 in. (6 mm) bubble gasket along the upper edge. A 1/4 in. (6 mm) wide intumescent strip affixed along the inside 1-1/8 in. (28 mm) leg. Composite vinyl profile is attached to the leg of the ceiling runner/track with 1/2 in. (12 mm) No. 8 framing screws or adhesively attached with double sided foam tape.

CALIFORNIA EXPANDED METAL PRODUCTS CO — Fire Gasket 0.5

B. **Forming Material*** — Min 2 in. (51 mm) thick min 4 pcf (64 kg/m³) mineral wool batt insulation compressed 30 percent in thickness, installed between deck and gypsum liner board.

C. **Fill, Void or Cavity Material* — Sealant** — (Not Shown) -Sealant may be used to seal any gaps at end joints between ceiling runners, and gaps above ceiling runner, to attain L Ratings.

HILTI CONSTRUCTION CHEMICALS, DIV OF HILTI INC — CP672 Firestop Spray or CFS-SP WB. Firestop Joint Spray

SPECIFIED TECHNOLOGIES INC — SpecSeal AS200 Elastomeric Spray

UNITED STATES GYPSUM CO — Type AS

D. **Packing Material** — (Not Shown) - When Item 3A or 3A1 is used, a continuous length of open cell polyurethane foam with a nominal diameter of 1/8 in. (3.2 mm) greater than the max width of the joint. The foam shall have a nominal density of 1.7 pcf. The foam is to be placed in the joint above the top edge of the drywall between the concrete slab. Any splices are to be tightly butted. A layer of tape and joint compound can then be applied over the open cell foam.

*** Indicates such products shall bear the UL or cUL Certification Mark for jurisdictions employing the UL or cUL Certification (such as Canada), respectively.**

[Last Updated](#) on 2020-06-08

The appearance of a company's name or product in this database does not in itself assure that products so identified have been manufactured under UL's Follow-Up Service. Only those products bearing the UL Mark should be considered to be Certified and covered under UL's Follow-Up Service. Always look for the Mark on the product.

UL permits the reproduction of the material contained in the Online Certification Directory subject to the following conditions: 1. The Guide Information, Assemblies, Constructions, Designs, Systems, and/or Certifications (files) must be presented in their entirety and in a non-misleading manner, without any manipulation of the data (or drawings). 2. The statement "Reprinted from the Online Certifications Directory with permission from UL" must appear adjacent to the extracted material. In addition, the reprinted material must include a copyright notice in the following format: "© 2022 UL LLC"