



# BXUV.V449

## Design/System/Construction/Assembly Usage Disclaimer

- Authorities Having Jurisdiction should be consulted in all cases as to the particular requirements covering the installation and use of UL Certified products, equipment, system, devices, and materials.
- Authorities Having Jurisdiction should be consulted before construction.
- Fire resistance assemblies and products are developed by the design submitter and have been investigated by UL for compliance with applicable requirements. The published information cannot always address every construction nuance encountered in the field.
- When field issues arise, it is recommended the first contact for assistance be the technical service staff provided by the product manufacturer noted for the design. Users of fire resistance assemblies are advised to consult the general Guide Information for each product category and each group of assemblies. The Guide Information includes specifics concerning alternate materials and alternate methods of construction.
- Only products which bear UL's Mark are considered Certified.

BXUV - Fire Resistance Ratings - ANSI/UL 263 Certified for United States

BXUV7 - Fire Resistance Ratings - CAN/ULC-S101 Certified for Canada

See General Information for Fire-resistance Ratings - ANSI/UL 263 Certified for United States  
Design Criteria and Allowable Variances

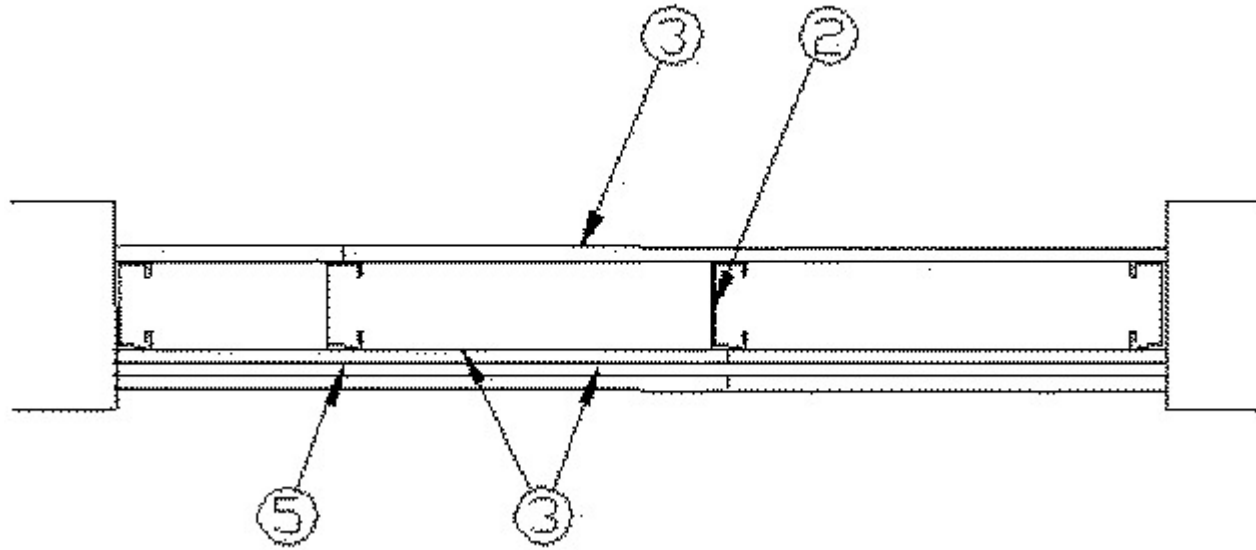
See General Information for Fire Resistance Ratings - CAN/ULC-S101 Certified for Canada  
Design Criteria and Allowable Variances

## Design No. V449

June 02, 2020

### Non-Bearing Wall Rating - 2 hr.

**\* Indicates such products shall bear the UL or cUL Certification Mark for jurisdictions employing the UL or cUL Certification (such as Canada), respectively.**



**1. Floor and Ceiling Runners** — (Not Shown) — Channel shaped, fabricated from min 25 MSG corrosion-protected steel, min width to accommodate stud size, with min 1 in. long legs, attached to floor and ceiling with fasteners 24 in. OC max.

**1A. Framing Members\* — Floor and Ceiling Runner** — Not Shown — In lieu of Item 1 — For use with Item 2A, proprietary channel shaped runners, min 3-1/2 in. wide with 1-1/4 in. long legs fabricated from min 0.018 in. thick galv steel, attached to floor and ceiling with fasteners spaced 24 in. OC max.

**CALIFORNIA EXPANDED METAL PRODUCTS CO** — Viper20™ Track

**MARINO/WARE, DIV OF WARE INDUSTRIES INC** — Viper20™ Track

**FUSION BUILDING PRODUCTS** — Viper20™ Track

**IMPERIAL MANUFACTURING GROUP INC** — Viper20™ Track

**1B. Framing Members\* — Floor and Ceiling Runners** — (Not Shown) — As an alternate to Item 1 - For use with Item 2B, channel shaped, min 3-1/2 in. wide fabricated from min 0.018 in. thick galv steel, attached to floor and ceiling with fasteners 24 in. OC. max.

**CLARKDIETRICH BUILDING SYSTEMS** — CD ProTRAK

**DMFCWBS L L C** — ProTRAK

**MBA METAL FRAMING** — ProTRAK

**RAM SALES L L C** — Ram ProTRAK

**STEEL STRUCTURAL PRODUCTS L L C** — Tri-S ProTRAK

1C. **Framing Members\* — Floor and Ceiling Runner** — Not Shown — In lieu of Item 1 — For use with Item 2C, proprietary channel shaped runners, min 3-1/2 in. wide with 1-1/4 in. long legs fabricated from min 0.018 in. thick galv steel, attached to floor and ceiling with fasteners spaced 24 in. OC max.

**TELLING INDUSTRIES L L C** — Viper20™ Track

1D. **Framing Members\* — Floor and Ceiling Runners** — (Not Shown) — As an alternate to Item 1 - For use with Item 2D, channel shaped, min 3-1/2 in. wide fabricated from min 0.018 in. thick galv steel, attached to floor and ceiling with fasteners 24 in. OC. max.

**TELLING INDUSTRIES L L C** — TRUE-TRACK™

1E. **Framing Members\* — Floor and Ceiling Runners** — (Not Shown) — As an alternate to Item 1 - For use with Item 2F, channel shaped, min 3-1/2 in. wide fabricated from min 0.018 in. thick galv steel, attached to floor and ceiling with fasteners 24 in. OC. max

**RESCUE METAL FRAMING, L L C** — AlphaTRAK

2. **Steel Studs** — Channel shaped, fabricated from min 25 MSG corrosion-protected steel, 3-1/2 in. min width, min 1-1/4 in. flanges and 1/4 in. return, spaced a max of 24 in. OC. Studs to be cut 3/8 to 3/4 in. less than assembly height.

2A. **Framing Members\* — Steel Studs** — Not Shown — In lieu of Item 2 — For use with Item 1A, proprietary channel shaped steel studs, 1-1/4 in. deep by min 3-1/2 in. min width fabricated from min 0.018 in. thick galv steel. Studs cut 3/8 to 3/4 in. less in length than assembly height.

**CALIFORNIA EXPANDED METAL PRODUCTS CO** — Viper20™

**MARINO/WARE, DIV OF WARE INDUSTRIES INC** — Viper20™

**FUSION BUILDING PRODUCTS** — Viper20™

**IMPERIAL MANUFACTURING GROUP INC** — Viper20™

2B. **Framing Members\* — Steel Studs** — As an alternate to Item 2 — For use with Item 1B, channel shaped studs, min 3-1/2 in. wide fabricated from min 0.018 in. thick galv steel, spaced a max of 24 in. OC. Studs to be cut 3/8 to 3/4 in. less than assembly height.

**CLARKDIETRICH BUILDING SYSTEMS** — CD ProSTUD

**DMFCWBS L L C** — ProSTUD

**MBA METAL FRAMING** — ProSTUD

**RAM SALES L L C** — Ram ProSTUD

**STEEL STRUCTURAL PRODUCTS L L C** — Tri-S ProSTUD

2C. **Framing Members\*** — **Steel Studs** — Not Shown — In lieu of Item 2 — For use with Item 1C, proprietary channel shaped steel studs, 1-1/4 in. deep by min 3-1/2 in. min width fabricated from min 0.018 in. thick galv steel. Studs cut 3/8 to 3/4 in. less in length than assembly height.

**TELLING INDUSTRIES L L C** — Viper20™

2D. **Framing Members\*** — **Steel Studs** — As an alternate to Item 2 — For use with Item 1D, channel shaped studs, min 3-1/2 in. wide fabricated from min 0.018 in. thick galv steel, spaced a max of 24 in. OC. Studs to be cut 3/8 to 3/4 in. less than assembly height.

**TELLING INDUSTRIES L L C** — TRUE-STUD™

2E. **Framing Members\*** — **Steel Studs** — As an alternate to Item 2 — For use with Item 1A (3-5/8 in. wide track), channel shaped studs, fabricated from min 25 MSG corrosion-protected steel, 1-1/4 in. wide by 3-5/8 in. deep, spaced a max of 24 in. OC. Studs to be cut 3/8 to 3/4 in. less than assembly height.

**MARINO/WARE, DIV OF WARE INDUSTRIES INC** — StudRite™

2F. **Framing Members\*** — **Steel Studs** — As an alternate to Item 2 — For use with Item 1E, channel shaped studs, min 3-1/2 in. wide fabricated from min 0.018 in. thick galv steel, spaced a max of 24 in. OC. Studs to be cut 3/8 to 3/4 in. less than assembly height.

**RESCUE METAL FRAMING, L L C** — AlphaSTUD

3. **Gypsum Board\*** — 5/8 in. thick, 4 ft. wide with beveled, square or tapered edges. Applied vertically with joints centered over studs and staggered between layers.

**NATIONAL GYPSUM CO** — 5/8 in. thick Type FSK, FSL, FSW, FSW-3, FSW-5, FSW-6, FSW-8, FSMR-C, FSW-C, FSK-C, FSLX, SoundBreak XP Type X Gypsum Board

3A. **Gypsum Board\*** — (As an alternate to 5/8 in. Type FSW in Item 3) — Nom. 5/16 in. thick gypsum panels applied vertically. Two layers of 5/16 in. for every single layer of 5/8 in. gypsum board described in Item 4. Horizontal joints on the same side need not be staggered. Inner layer of each double 5/16 in. layer attached with fasteners, as described in item 4, spaced 24 in. OC. Outer layer of each double 5/16 in. layer attached per Item 4.

**NATIONAL GYPSUM CO** — Type FSW

4. **Fasteners** — (Not Shown) — For base layer, 1-1/8 in. Type S screws used to attach panels to studs, spaced 8 in. OC. around perimeter and 12 in. OC. in field. Second layer, 1-5/8 in. long Type S screws spaced 12 in. OC. around perimeter and 12 in. OC. in field. Second layer screws staggered 6 in. OC. from base layer. Face layer, 2-1/4 in. Type S screws spaced 8 in. OC. around perimeter and 12 in. OC. in field. Face layer perimeter screws staggered 1 in. OC. from second layer and staggered 6 in. OC. in field.

5. **Joint Tape and Compound** — Vinyl or casein, dry or premixed joint compound applied in two coats to joints and screw heads of outer layers. Paper tape, nom 2 in. wide, embedded in first layer of compound over all joints of outer panels.

**\* Indicates such products shall bear the UL or cUL Certification Mark for jurisdictions employing the UL or cUL Certification (such as Canada), respectively.**

Last Updated on 2020-06-02

---

The appearance of a company's name or product in this database does not in itself assure that products so identified have been manufactured under UL's Follow-Up Service. Only those products bearing the UL Mark should be considered to be Certified and covered under UL's Follow-Up Service. Always look for the Mark on the product.

UL permits the reproduction of the material contained in the Online Certification Directory subject to the following conditions: 1. The Guide Information, Assemblies, Constructions, Designs, Systems, and/or Certifications (files) must be presented in their entirety and in a non-misleading manner, without any manipulation of the data (or drawings). 2. The statement "Reprinted from the Online Certifications Directory with permission from UL" must appear adjacent to the extracted material. In addition, the reprinted material must include a copyright notice in the following format: "© 2020 UL LLC"