

BXUV.V425

Design/System/Construction/Assembly Usage Disclaimer

- Authorities Having Jurisdiction should be consulted in all cases as to the particular requirements covering the installation and use of UL Certified products, equipment, system, devices, and materials.
- Authorities Having Jurisdiction should be consulted before construction.
- Fire resistance assemblies and products are developed by the design submitter and have been investigated by UL for compliance with applicable requirements. The published information cannot always address every construction nuance encountered in the field.
- When field issues arise, it is recommended the first contact for assistance be the technical service staff provided by the product manufacturer noted for the design. Users of fire resistance assemblies are advised to consult the general Guide Information for each product category and each group of assemblies. The Guide Information includes specifics concerning alternate materials and alternate methods of construction.
- Only products which bear UL's Mark are considered Certified.

BXUV - Fire Resistance Ratings - ANSI/UL 263 Certified for United States

BXUV7 - Fire Resistance Ratings - CAN/ULC-S101 Certified for Canada

See General Information for Fire-resistance Ratings - ANSI/UL 263 Certified for United States
Design Criteria and Allowable Variances

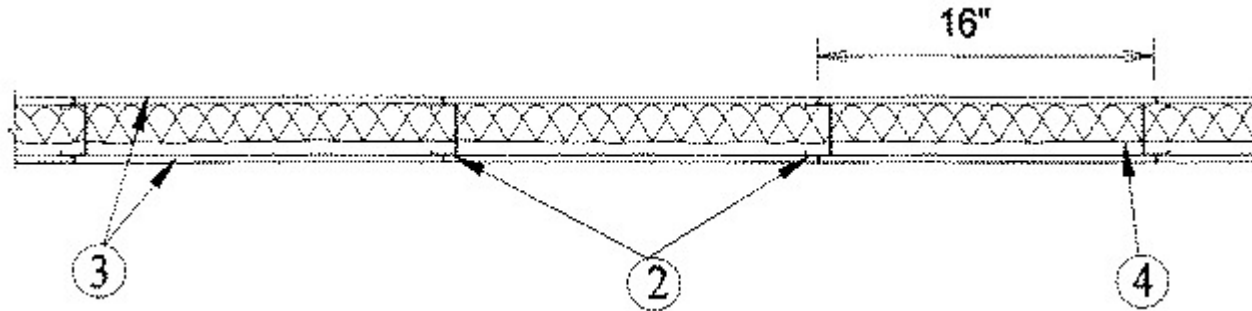
See General Information for Fire Resistance Ratings - CAN/ULC-S101 Certified for Canada
Design Criteria and Allowable Variances

Design No. V425

June 02, 2020

Nonbearing Wall Rating — 1 Hr

*** Indicates such products shall bear the UL or cUL Certification Mark for jurisdictions employing the UL or cUL Certification (such as Canada), respectively.**



1. Floor and Ceiling Runners — Channel-shaped runners, min 2-1/2 in. wide with 1-3/8 in. deep legs, fabricated from No. 25 MSG galv steel, attached to concrete or masonry with fasteners 24 in. OC.

1A. Framing Members* — Floor and Ceiling Runners — Not Shown — In lieu of Item 1 — For use with Item 2A, proprietary channel shaped runners, 1-1/4 in. deep by min 2-1/2 in. wide fabricated from min 0.018 in. thick galv steel, attached to floor and ceiling with fasteners spaced 24 in. OC max.

CALIFORNIA EXPANDED METAL PRODUCTS CO — Viper20™ Track

MARINO/WARE, DIV OF WARE INDUSTRIES INC — Viper20™ Track

FUSION BUILDING PRODUCTS — Viper20™ Track

IMPERIAL MANUFACTURING GROUP INC — Viper20™ Track

1B. Framing Members* — Floor and Ceiling Runners — Not Shown — In lieu of Item 1 — For use with Item 2B, channel shaped runners, 1-1/4 in. deep by min 2-1/2 in. wide fabricated from min 0.018 in. thick galv steel, attached to floor and ceiling with fasteners spaced 24 in. OC max.

CLARKDIETRICH BUILDING SYSTEMS — CD ProTRAK

DMFCWBS L L C — ProTRAK

MBA METAL FRAMING — ProTRAK

RAM SALES L L C — Ram ProTRAK

STEEL STRUCTURAL PRODUCTS L L C — Tri-S ProTRAK

1C. Framing Members* — Floor and Ceiling Runners — Not Shown — In lieu of Item 1 — For use with Item 2C, proprietary channel shaped runners, 1-1/4 in. deep by min 2-1/2 in. wide fabricated from min 0.018 in. thick galv steel, attached to floor and ceiling with fasteners spaced 24 in. OC max.

TELLING INDUSTRIES L L C — Viper20™ Track

1D. **Framing Members* — Floor and Ceiling Runners** — Not Shown — In lieu of Item 1 — For use with Item 2D, channel shaped runners, 1-1/4 in. deep by min 2-1/2 in. wide fabricated from min 0.018 in. thick galv steel, attached to floor and ceiling with fasteners spaced 24 in. OC max.

TELLING INDUSTRIES L L C — TRUE-TRACK™

1E. **Framing Members* — Floor and Ceiling Runners** — Not Shown — In lieu of Item 1 — For use with Item 2F, channel shaped runners, 1-1/4 in. deep by min 3-1/2 in. wide fabricated from min 0.018 in. thick galv steel, attached to floor and ceiling with fasteners spaced 24 in. OC max.

RESCUE METAL FRAMING, L L C — AlphaTRAK

2. **Steel Studs** — Channel-shaped, min 2-1/2 in. wide by 1-1/4 in. deep with 1/4 in. folded back return flange legs, fabricated from No. 25 MSG galv steel. Max stud spacing 16 in. OC. Studs to be cut to 1/2 in. less assembly height. Studs to be friction fit into floor and ceiling runners (Item 1).

2A. **Framing Members* — Steel Studs** — Not Shown — In lieu of Item 2 — For use with Item 1A, proprietary channel shaped steel studs, 1-1/4 in. deep by min 2-1/2 in. wide fabricated from min 0.018 in. thick galv steel. Studs cut 1/2 in. less in length than assembly height. Spaced 16 in. OC max.

CALIFORNIA EXPANDED METAL PRODUCTS CO — Viper20™

MARINO/WARE, DIV OF WARE INDUSTRIES INC — Viper20™

FUSION BUILDING PRODUCTS — Viper20™

IMPERIAL MANUFACTURING GROUP INC — Viper20™

2B. **Framing Members* — Steel Studs** — Not Shown — In lieu of Item 2 — For use with Item 1B, channel shaped steel studs, 1-1/4 in. deep by min 2-1/2 in. wide fabricated from min 0.018 in. thick galv steel. Studs cut 1/2 in. less in length than assembly height. Spaced 16 in. OC max.

CLARKDIETRICH BUILDING SYSTEMS — CD ProSTUD

DMFCWBS L L C — ProSTUD

MBA METAL FRAMING — ProSTUD

RAM SALES L L C — Ram ProSTUD

STEEL STRUCTURAL PRODUCTS L L C — Tri-S ProSTUD

2C. **Framing Members* — Steel Studs** — Not Shown — In lieu of Item 2 — For use with Item 1C, proprietary channel shaped steel studs, 1-1/4 in. deep by min 2-1/2 in. wide fabricated from min 0.018 in. thick galv steel. Studs cut 1/2 in. less in length than assembly height. Spaced 16 in. OC max.

TELLING INDUSTRIES L L C — Viper20™

2D. **Framing Members* — Steel Studs** — Not Shown — In lieu of Item 2 — For use with Item 1D, channel shaped steel studs, 1-1/4 in. deep by min 2-1/2 in. wide fabricated from min 0.018 in. thick galv steel. Studs cut 1/2 in. less in length than assembly height. Spaced 16 in. OC max.

TELLING INDUSTRIES L L C — TRUE-STUD™

2E. **Framing Members* — Steel Studs** — As an alternate to Item 2 — For use with Item 1A (3-5/8 in. wide track), channel shaped studs, fabricated from min 25 MSG corrosion-protected steel, 1-1/4 in. wide by 3-5/8 in. deep, spaced a max of 16 in. OC. Studs to be cut 3/8 to 3/4 in. less than assembly height.

MARINO/WARE, DIV OF WARE INDUSTRIES INC — StudRite™

2F. **Framing Members* — Steel Studs** — Not Shown — In lieu of Item 2 — For use with Item 1E, channel shaped steel studs, 1-1/4 in. deep by min 3-1/2 in. wide fabricated from min 0.018 in. thick galv steel. Studs cut 1/2 in. less in length than assembly height. Spaced 16 in. OC max.

RESCUE METAL FRAMING, L L C — AlphaSTUD

3. **Gypsum Board*** — 5/8 in. thick, 4 ft wide gypsum board attached to steel studs and floor and ceiling runners with 1-1/4 in. long self-drilling, self-tapping, bugle head steel screws spaced 8 in. OC along the edges of the board and 12 in. OC in the field of the board. Joints oriented vertically and staggered 24 in. on opposite sides of the assembly. Joints covered with paper tape and joint compound. Exposed screw heads covered with joint compound.

NATIONAL GYPSUM CO — Types eXP-C, FSK, FSK-C, FSL, FSMR-C, FSW, FSW-3, FSW-5, FSW-6, FSW-8, FSW-C, Type SBWB

3A. **Gypsum Board*** — (As an alternate to 5/8 in. Type FSW in Item 3) - 2 layers nom. 5/16 in. thick gypsum panels applied vertically. Horizontal joints on the same side need not be staggered. Inner layer attached with fasteners, as described in item 3, spaced 24 in. OC. Outer layer attached per Item 3.

NATIONAL GYPSUM CO — Type FSW

4. **Sprayed Fiber*** — Applied by spraying with water to a min untamped thickness of 1-1/2 in. within interior wall cavities. Minimum average density of 6.0 pcf with minimum individual density of 5.0 pcf. For method of density determination, refer to General Information Section.

INTERNATIONAL CELLULOSE CORP — Celbar-RL

*** Indicates such products shall bear the UL or cUL Certification Mark for jurisdictions employing the UL or cUL Certification (such as Canada), respectively.**

Last Updated on 2020-06-02

The appearance of a company's name or product in this database does not in itself assure that products so identified have been manufactured under UL's Follow-Up Service. Only those products bearing the UL Mark should be considered to be Certified and covered under UL's Follow-Up Service. Always look for the Mark on the product.

UL permits the reproduction of the material contained in the Online Certification Directory subject to the following conditions: 1. The Guide Information, Assemblies, Constructions, Designs, Systems, and/or Certifications (files) must be presented in their entirety and in a non-misleading manner, without any manipulation of the data (or drawings). 2. The statement "Reprinted from the Online Certifications Directory with permission from UL" must appear adjacent to the extracted material. In addition, the reprinted material must include a copyright notice in the following format:

"© 2020 UL LLC"