

BXUV.U444 -

Design/System/Construction/Assembly Usage Disclaimer

- Authorities Having Jurisdiction should be consulted in all cases as to the particular requirements covering the installation and use of UL Certified products, equipment, system, devices, and materials.
- Authorities Having Jurisdiction should be consulted before construction.
- Fire resistance assemblies and products are developed by the design submitter and have been investigated by UL for compliance with applicable requirements. The published information cannot always address every construction nuance encountered in the field.
- When field issues arise, it is recommended the first contact for assistance be the technical service staff provided by the product manufacturer noted for the design. Users of fire resistance assemblies are advised to consult the general Guide Information for each product category and each group of assemblies. The Guide Information includes specifics concerning alternate materials and alternate methods of construction.
- Only products which bear UL's Mark are considered Certified.

BXUV - Fire Resistance Ratings - ANSI/UL 263 Certified for United States

BXUV7 - Fire Resistance Ratings - CAN/ULC-S101 Certified for Canada

See General Information for Fire-resistance Ratings - ANSI/UL 263 Certified for United States
Design Criteria and Allowable Variances

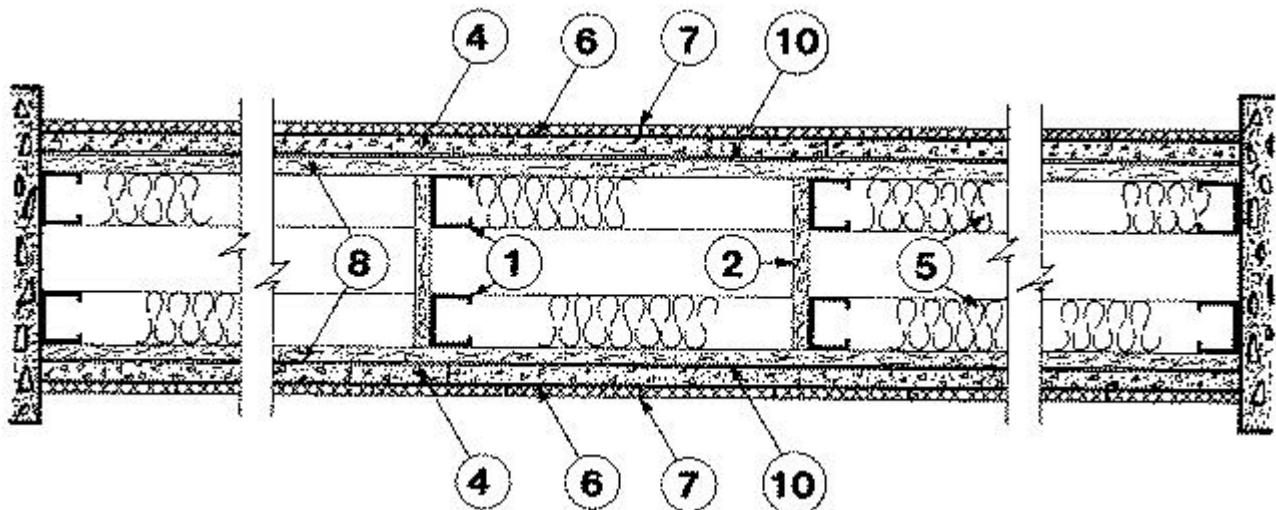
See General Information for Fire Resistance Ratings - CAN/ULC-S101 Certified for Canada
Design Criteria and Allowable Variances

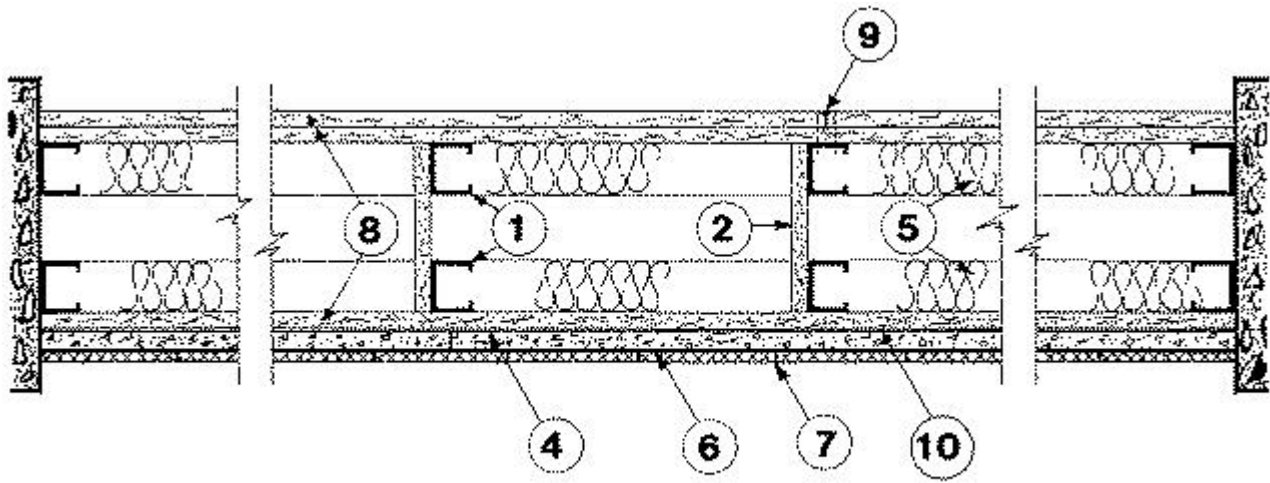
Design No. U444

March 12, 2020

Nonbearing Wall Rating — 2 HR.

*** Indicates such products shall bear the UL or cUL Certification Mark for jurisdictions employing the UL or cUL Certification (such as Canada), respectively.**





ALTERNATE CONSTRUCTION

1. Studs — Channel shaped 1-5/8 in. wide by 1-1/4 in. deep with 3/16 in. folded back return flange legs. Fabricated from 20 MSG (0.0329 in., min. bare metal thickness) galvanized steel. Max stud spacing 16 in. OC. Studs to be cut 3/8 to 3/4 in. less than assembly height.

1A. Framing Members*— Steel Studs — As an alternate to Item 1 - For use with Item 3A, channel shaped studs, min 1-5/8 in. wide, spaced a max of 24 in. OC. Studs to be cut 1/2 in. less than assembly height.

CLARKDIETRICH BUILDING SYSTEMS — CD ProSTUD

DMFCWBS L L C — ProSTUD

MBA METAL FRAMING — ProSTUD

RAM SALES L L C — Ram ProSTUD

STEEL STRUCTURAL PRODUCTS L L C — Tri-S ProSTUD

1B. Framing Members*— Steel Studs — As an alternate to Item 1 - For use with Item 3B, channel shaped studs, min 1-5/8 in. deep, spaced a max of 24 in. OC. Studs to be cut 1/2 in. less than assembly height.

MARINO/WARE, DIV OF WARE INDUSTRIES INC — Viper25™

FUSION BUILDING PRODUCTS — Viper25™

IMPERIAL MANUFACTURING GROUP INC — Viper25™

2. Bracing — Steel bracing cut to the same length as the cavity width, from steel runners or studs. Steel bracing is fastened with 3/8 in. long Type S-12 screws, two screws at each end to each stud. As an alternate, 6 in. wide gypsum bracing, cut to the same length as cavity width, may be used in walls with a cavity width up to 9-1/2 in. Gypsum bracing is fastened with 1 in. long Type S-12 screws, two screws at each end to each stud. Vertical spacing of the bracing is max 48 in. OC.

3. Floor and Ceiling Runners — (not shown) — Channel shaped runners, 1-5/8 in. wide by 1-1/4 in. deep, fabricated from 20 MSG (0.0329 in., min. bare metal thickness)galvanized steel. Attached to floor and ceiling with fasteners, 24 in. OC, max.

3A. Framing Members*— Floor and Ceiling Runners — (Not shown) — As an alternate to Item 3 - For use with Item 1A, channel shaped, min 1-5/8 in. wide, attached to floor and ceiling with fasteners 24 in. OC. max.

CLARKDIETRICH BUILDING SYSTEMS — CD ProTRAK

DMFCWBS L L C — ProTRAK

MBA METAL FRAMING — ProTRAK

RAM SALES L L C — Ram ProTRAK

STEEL STRUCTURAL PRODUCTS L L C — Tri-S ProTRAK

3B. Framing Members*— Floor and Ceiling Runners — (Not shown) — As an alternate to Item 3 - For use with Item 1B, channel shaped, min 1-5/8 in. deep, attached to floor and ceiling with fasteners 24 in. OC. max.

MARINO/WARE, DIV OF WARE INDUSTRIES INC — Viper25™Track

FUSION BUILDING PRODUCTS — Viper25™ Track

IMPERIAL MANUFACTURING GROUP INC — Viper25™ Track

4. Cementitious Backer Units* — 1/2 or 5/8 in. thick, applied vertically or horizontally with vertical joints centered over studs. Horizontal joints need not be backed by framing. Fastened to studs and bottom runners with the uppermost screws palced 1/2 in. to 2 in. below the bottom edge of the leg of the top runner with corrosion resistant 1-5/8 in. long chamfered, ribbed wafer head screws with a minimum head diameter of .400 inch, spaced 8 in. OC. Joints covered with glass fiber mesh tape and latex modified portland cement mortar or Type I organic adhesive.

UNITED STATES GYPSUM CO — Type DCB

5. Batts and Blankets* — Min 1-1/2 in. thick mineral wool insulation batts, friction-fitted between studs and ceiling and floor runners in both stud cavities.

INDUSTRIAL INSULATION GROUP L L C — Type SAFB

JOHNS MANVILLE — Type SAFB

ROCKWOOL — AFB, min. density 1.8 pcf / 28.8 kg/m³

THERMAFIBER INC — Type SAFB, SAFB FF

6. Bond Coat for Setting Tile — Latex modified portland cement mortar or Type I organic adhesive applied with a notched trowel.

7. Ceramic Tile — 1/4 in. thick, joints filled with grout.

8. Gypsum Board* — 1/2 in. thick with square or tapered edges. Base layer applied vertically with vertical joints centered over studs, fastened to studs and bottom runner with 1 in. long, Type S-12 steel screws, spaced 24 in. OC. Face layer applied vertically with joints offset from base layer joints, fastened to studs and runners with 1-5/8 in. long, Type S-12 screws, spaced 12 in. OC.

AMERICAN GYPSUM CO — Types AG-C.

CABOT MANUFACTURING ULC — Type C

CERTAINTED GYPSUM INC — Type C.

CGC INC — Type C, IP-X2, IPC-AR or WRC.

CONTINENTAL BUILDING PRODUCTS OPERATING CO, L L C — Type LGFC-C/A.

GEORGIA-PACIFIC GYPSUM L L C — Types 5, DAPC, TG-C.

NATIONAL GYPSUM CO — Types eXP-C, FSK-C, FSW-C, FSMR-C.

PABCO BUILDING PRODUCTS L L C, DBA PABCO GYPSUM — Type PG-C.

PANEL REY S A — Type PRC

SAINT-GOBAIN GYPROC MIDDLE EAST FZE — Type Gyproc FireStop, Gyproc FireStop MR, Gyproc FireStop M2TECH, Gyproc FireStop ACTIV'Air, Gyproc FireStop MR ACTIV'Air, Gyproc FireStop M2TECH ACTIV'Air

THAI GYPSUM PRODUCTS PCL — Type C.

UNITED STATES GYPSUM CO — Type C, IP-X2, IPC-AR or WRC.

USG BORAL DRYWALL SFZ LLC — Type C

USG MEXICO S A DE C V — Type C, IP-X2, IPC-AR or WRC.

8A. **Gypsum Board** — (As alternate to Item 8) - 1/2 in. thick with square or tapered edges, applied vertically or horizontally with vertical joints centered over studs. Horizontal edge joints and horizontal butt joints on opposite sides of studs need not be staggered or backed. Base layer fastened to studs and runners with 1 in. long Type S-12 screws spaced 24 in. OC when applied horizontally, or 8 in. OC along vertical edges and runners, and spaced 12 in. OC in the field when applied vertically. Face layer fastened to studs and runners with 1-5/8 in. long Type S-12 screws spaced 8 in. OC when applied horizontally, or 12 in. OC when applied vertically.

CGC INC — Type C, IP-X2, IPC-AR or WRC.

UNITED STATES GYPSUM CO — Type C, IP-X2, IPC-AR or WRC

USG BORAL DRYWALL SFZ LLC — Type C

USG MEXICO S A DE C V — Type C, IP-X2, IPC-AR or WRC.

8B. **Gypsum Board*** — (As an alternate to Item 8) — 5/8 in. thick. Installed as described in Item 8.

NATIONAL GYPSUM CO — Type FSMR-C.

UNITED STATES GYPSUM CO — Type ULIX

9. **Joints** — Gypsum board joints covered with paper tape and joint compound. As an alternate, gypsum veneer plaster may be applied to the entire surface of Classified veneer baseboard with joints reinforced. When square-edge gypsum board is used, treatment of joints is optional.

10. **Vapor Retarder, Water Barrier or Weather Resistive Barrier** — (Optional) — as required.

*** Indicates such products shall bear the UL or cUL Certification Mark for jurisdictions employing the UL or cUL Certification (such as Canada), respectively.**

Last Updated on 2020-03-12

The appearance of a company's name or product in this database does not in itself assure that products so identified have been manufactured under UL's Follow-Up Service. Only those products bearing the UL Mark should be considered to be Certified and covered under UL's Follow-Up Service. Always look for the Mark on the product.

UL permits the reproduction of the material contained in the Online Certification Directory subject to the following conditions: 1. The Guide Information, Assemblies, Constructions, Designs, Systems, and/or Certifications (files) must be presented in their entirety and in a non-misleading manner, without any manipulation of the data (or drawings). 2. The statement "Reprinted from the Online Certifications Directory with permission from UL" must appear adjacent to the extracted material. In addition, the reprinted material must include a copyright notice in the following format: "© 2020 UL LLC"