



# BXUV.U408

## Design/System/Construction/Assembly Usage Disclaimer

- Authorities Having Jurisdiction should be consulted in all cases as to the particular requirements covering the installation and use of UL Certified products, equipment, system, devices, and materials.
- Authorities Having Jurisdiction should be consulted before construction.
- Fire resistance assemblies and products are developed by the design submitter and have been investigated by UL for compliance with applicable requirements. The published information cannot always address every construction nuance encountered in the field.
- When field issues arise, it is recommended the first contact for assistance be the technical service staff provided by the product manufacturer noted for the design. Users of fire resistance assemblies are advised to consult the general Guide Information for each product category and each group of assemblies. The Guide Information includes specifics concerning alternate materials and alternate methods of construction.
- Only products which bear UL's Mark are considered Certified.

## BXUV - Fire Resistance Ratings - ANSI/UL 263 Certified for United States BXUV7 - Fire Resistance Ratings - CAN/ULC-S101 Certified for Canada

See General Information for Fire-resistance Ratings - ANSI/UL 263 Certified for United States  
Design Criteria and Allowable Variances

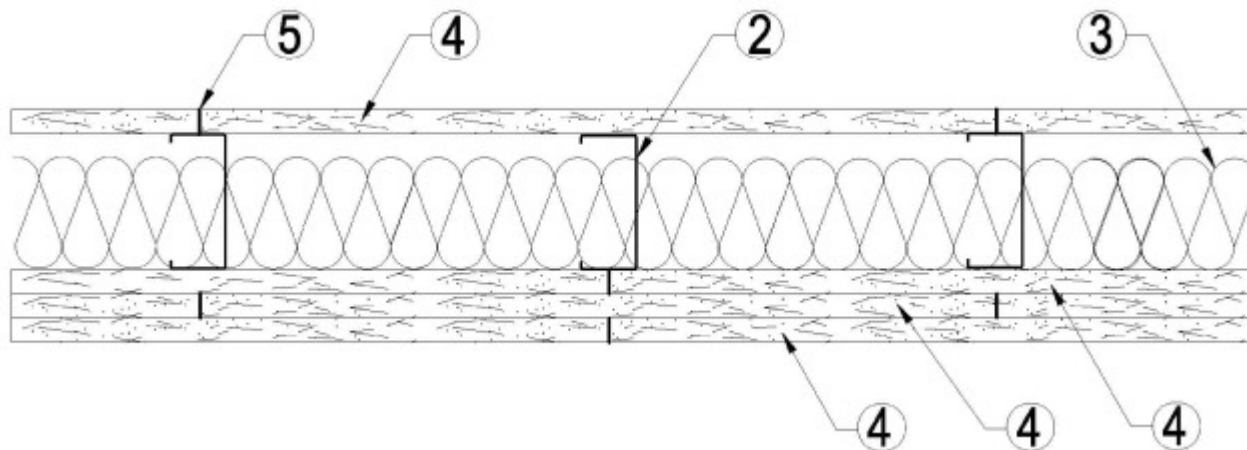
See General Information for Fire Resistance Ratings - CAN/ULC-S101 Certified for Canada  
Design Criteria and Allowable Variances

### **Design No. U408**

May 28, 2020

### **Nonbearing Wall Rating — 2 Hr**

**\* Indicates such products shall bear the UL or cUL Certification Mark for jurisdictions employing the UL or cUL Certification (such as Canada), respectively.**



**1. Floor and Ceiling Runners** — (Not Shown) — Channel shaped, 3-1/2 in. (min) deep, with min 1-1/4 in. long legs, fabricated from min 25 MSG corrosion-protected steel, attached to floor and ceiling with fasteners 24 in. OC max.

**1A. Framing Members\* — Floor and Ceiling Runner** — Not Shown — In lieu of Item 1 — For use with Item 2A, proprietary channel shaped runners, 1-1/4 in. deep by min 3-1/2 in. wide fabricated from min 0.018 in. thick galv steel, attached to floor and ceiling with fasteners spaced 24 in. OC max.

**CALIFORNIA EXPANDED METAL PRODUCTS CO** — Viper20™ Track

**MARINO/WARE, DIV OF WARE INDUSTRIES INC** — Viper20™ Track

**FUSION BUILDING PRODUCTS** — Viper20™ Track

**IMPERIAL MANUFACTURING GROUP INC** — Viper20™ Track

**1B. Framing Members\* — Floor and Ceiling Runners** — Not Shown — In lieu of Item 1 — For use with Item 2B, channel shaped runners, 1-1/4 in. deep by min 3-1/2 in. wide fabricated from min 0.018 in. thick galv steel, attached to floor and ceiling with fasteners spaced 24 in. OC max.

**CLARKDIETRICH BUILDING SYSTEMS** — CD ProTRAK

**DMFCWBS L L C** — ProTRAK

**MBA METAL FRAMING** — ProTRAK

**RAM SALES L L C** — Ram ProTRAK

**STEEL STRUCTURAL PRODUCTS L L C** — Tri-S ProTRAK

1C. **Framing Members\* — Floor and Ceiling Runner** — Not Shown — In lieu of Item 1 — For use with Item 2C, proprietary channel shaped runners, 1-1/4 in. deep by min 3-1/2 in. wide fabricated from min 0.018 in. thick galv steel, attached to floor and ceiling with fasteners spaced 24 in. OC max.

**TELLING INDUSTRIES L L C** — Viper20™ Track

1D. **Framing Members\* — Floor and Ceiling Runners** — Not Shown — In lieu of Item 1 — For use with Item 2D, channel shaped runners, 1-1/4 in. deep by min 3-1/2 in. wide fabricated from min 0.018 in. thick galv steel, attached to floor and ceiling with fasteners spaced 24 in. OC max.

**TELLING INDUSTRIES L L C** — TRUE-TRACK™

1E. **Framing Members\* — Floor and Ceiling Runners** — Not Shown — In lieu of Item 1 — For use with Item 2F, channel shaped runners, 1-1/4 in. deep by min 3-1/2 in. wide fabricated from min 0.018 in. thick galv steel, attached to floor and ceiling with fasteners spaced 24 in. OC max.

**RESCUE METAL FRAMING, L L C** — AlphaTRAK

2. **Steel Studs** — Channel shaped, min 3-1/2 in. deep, 1-1/4 in. flanges and 3/16 in. returns, fabricated from min 25 MSG corrosion-protected steel, spaced a max of 24 in. OC. Studs to be cut 5/8 in. less than assembly height and friction-fit in place.

2A. **Framing Members\* — Steel Studs** — Not Shown — In lieu of Item 2 — For use with Item 1A, proprietary channel shaped steel studs, 1-1/4 in. deep by min 3-1/2 in. wide fabricated from min 0.018 in. thick galv steel. Studs cut 5/8 in. less in length than assembly height.

**CALIFORNIA EXPANDED METAL PRODUCTS CO** — Viper20™

**MARINO/WARE, DIV OF WARE INDUSTRIES INC** — Viper20™

**FUSION BUILDING PRODUCTS** — Viper20™

**IMPERIAL MANUFACTURING GROUP INC** — Viper20™

2B. **Framing Members\* — Steel Studs** — Not Shown — In lieu of Item 2 — For use with Item 1B, channel shaped steel studs, min 3-1/2 in. wide fabricated from min 0.018 in. thick galv steel, spaced a max of 24 in. OC. Studs cut 5/8 in. less in length than assembly height.

**CLARKDIETRICH BUILDING SYSTEMS** — CD ProSTUD

**DMFCWBS L L C** — ProSTUD

**MBA METAL FRAMING** — ProSTUD

**RAM SALES L L C** — Ram ProSTUD

**STEEL STRUCTURAL PRODUCTS L L C** — Tri-S ProSTUD

2C. **Framing Members\* — Steel Studs** — Not Shown — In lieu of Item 2 — For use with Item 1C, proprietary channel shaped steel studs, 1-1/4 in. deep by min 3-1/2 in. wide fabricated from min 0.018 in. thick galv steel. Studs cut 5/8 in. less in length than assembly height.

**TELLING INDUSTRIES L L C** — Viper20™

2D. **Framing Members\* — Steel Studs** — Not Shown — In lieu of Item 2 — For use with Item 1D, channel shaped steel studs, min 3-1/2 in. wide fabricated from min 0.018 in. thick galv steel, spaced a max of 24 in. OC. Studs cut 5/8 in. less in length than assembly height.

**TELLING INDUSTRIES L L C** — TRUE-STUD™

2E. **Framing Members\* — Steel Studs** — As an alternate to Item 2 — For use with Item 1A (3-5/8 in. wide track), channel shaped studs, fabricated from min 25 MSG corrosion-protected steel, 1-1/4 in. wide by 3-5/8 in. deep, spaced a max of 24 in. OC. Studs to be cut 3/8 to 3/4 in. less than assembly height.

**MARINO/WARE, DIV OF WARE INDUSTRIES INC** — StudRite™

2F. **Framing Members\* — Steel Studs** — Not Shown — In lieu of Item 2 — For use with Item 1E, channel shaped steel studs, min 3-1/2 in. wide fabricated from min 0.018 in. thick galv steel, spaced a max of 24 in. OC. Studs cut 5/8 in. less in length than assembly height.

**RESCUE METAL FRAMING, L L C** — AlphaSTUD

3. **Batts and Blankets\*** — (Optional) Placed in stud cavities, any glass fiber or mineral wool insulation bearing the UL Classification Marking as to Surface Burning Characteristics and/or Fire Resistance.

See **Batts and Blankets** (BKNV or BZJZ) Categories for names of Classified companies.

4. **Gypsum Board\*** — Gypsum panels with beveled, square or tapered edges. Base layer applied vertically or horizontally on both sides of the studs, with vertical joints centered over studs and staggered one stud cavity on opposite sides of studs. Horizontal edge joints (when applied horizontally) and horizontal butt joints (when applied vertically) on opposite sides of studs need not be staggered or backed. Base layer panels attached to studs with 1 in. long Type S crews spaced 8 in. OC when applied horizontally, or 8 in. OC along the vertical edges and 12 in. OC in the field when applied vertically. Remaining two layers applied vertically or horizontally on one side of the wall. Horizontal butt joints staggered a min of 6 in. on adjacent layers. First of these two layers attached to studs with 1-5/8 in. long Type S screws spaced 12 in. OC. Face layer attached to studs with 2-3/8 in. Type S screws spaced 8 in. OC when applied horizontally, or 8 in. OC along the vertical edges and 12 in. OC in the field when applied vertically. When used in widths other than 48 in., gypsum panels to be installed horizontally.

**CGC INC** — 5/8 in. thick Type AR, C, IP-AR, IP-X1, IP-X2, IPC-AR, SCX, SHX, USGX, WRX or WRC (Joint tape and compound, Item 5, optional for use with Type USGX).

**UNITED STATES GYPSUM CO** — 5/8 in. thick Type AR, C, FRX-G, IP-AR, IP-X1, IP-X2, IPC-AR, SCX, SGX, SHX, WRX, WRC, ULIX, USGX (Joint tape and compound, Item 5, optional for use with Type USGX).

**USG BORAL DRYWALL SFZ LLC** — Types C, SCX, SGX, USGX (Joint tape and compound, Item 5, optional for use with Type USGX).

**USG MEXICO S A DE C V** — 5/8 in. thick Type AR, C, IP-AR, IP-X1, IP-X2, IPC-AR, SCX, SHX, USGX, WRX, WRC (Joint tape and compound, Item 5, optional for use with Type USGX).

4A. **Gypsum Board\*** — (As an alternate to Item 4, not for use with Items 1B and 2B) - Nom 5/8 in. thick gypsum panels with beveled, square or tapered edges installed as described in Item 4.

**CGC INC** — Type ULX

**UNITED STATES GYPSUM CO** — Type ULX.

**USG MEXICO S A DE C V** — Type ULX

5. **Joint Tape and Compound** — Vinyl or casein, dry or premixed joint compound applied in two coats to joints and screw heads of outer layers. Paper tape, nom 2 in. wide, embedded in first layer of compound over all joints of outer layer panels. When square-edge gypsum board is used, treatment of joints is optional.

6. **Caulking and Sealants\*** — (Optional, Not Shown) — A bead of acoustical sealant applied around the partition perimeter for sound control.

**UNITED STATES GYPSUM CO** — Type AS

**\* Indicates such products shall bear the UL or cUL Certification Mark for jurisdictions employing the UL or cUL Certification (such as Canada), respectively.**

Last Updated on 2020-05-28

---

The appearance of a company's name or product in this database does not in itself assure that products so identified have been manufactured under UL's Follow-Up Service. Only those products bearing the UL Mark should be considered to be Certified and covered under UL's Follow-Up Service. Always look for the Mark on the product.

UL permits the reproduction of the material contained in the Online Certification Directory subject to the following conditions: 1. The Guide Information, Assemblies, Constructions, Designs, Systems, and/or Certifications (files) must be presented in their entirety and in a non-misleading manner, without any manipulation of the data (or drawings). 2. The statement "Reprinted from the Online Certifications Directory with permission from UL" must appear adjacent to the extracted material. In addition, the reprinted material must include a copyright notice in the following format: "© 2020 UL LLC"