



XHBN.BW-S-0053 - Joint Systems

Design/System/Construction/Assembly Usage Disclaimer

- Authorities Having Jurisdiction should be consulted in all cases as to the particular requirements covering the installation and use of UL Certified products, equipment, system, devices, and materials.
- Authorities Having Jurisdiction should be consulted before construction.
- Fire resistance assemblies and products are developed by the design submitter and have been investigated by UL for compliance with applicable requirements. The published information cannot always address every construction nuance encountered in the field.
- When field issues arise, it is recommended the first contact for assistance be the technical service staff provided by the product manufacturer noted for the design. Users of fire resistance assemblies are advised to consult the general Guide Information for each product category and each group of assemblies. The Guide Information includes specifics concerning alternate materials and alternate methods of construction.
- Only products which bear UL's Mark are considered Certified.

XHBN - Joint Systems

XHBN7 - Joint Systems Certified for Canada

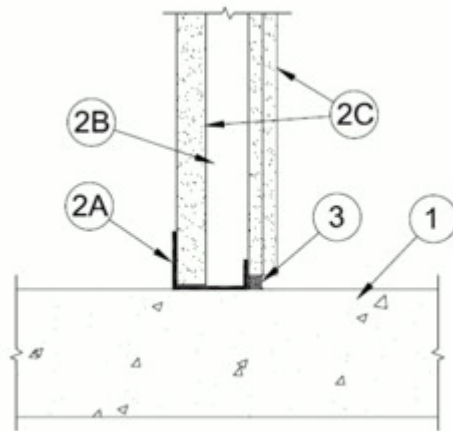
See General Information for Joint Systems

See General Information for Joint Systems Certified for Canada

System No. BW-S-0053

November 07, 2019

ANSI/UL2079	CAN/ULC S115
Assembly Ratings — 1 and 2 Hr (See Item 2)	F Ratings — 1 and 2 Hr (See Item 2)
Joint Width - 1/2 In. Max	FT Ratings — 1 and 2 Hr (See Item 2)
	FH Ratings — 1 and 2 Hr (See Item 2)
	FTH Ratings — 1 and 2 Hr (See Item 2)
	Joint Width - 1/2 In. Max



1. Floor Assembly — Min 4-1/2 in. (114 mm) thick reinforced lightweight or normal weight (100-150 pcf or 1600-2400 kg/m³) structural concrete. Floor may also be constructed of any min 6 in. (152 mm) thick UL Classified hollow-core **Precast Concrete Units***.

See **Precast Concrete Units** (CFTV) category in the Fire Resistance Directory for names of manufactures.

2. Wall Assembly — The 1 or 2 hr fire rated gypsum board/steel stud shaft wall assembly shall be constructed of the materials and in the manner specified in the individual U400, V400 or W400 Series Wall and Partition Design in the UL Fire Resistance Directory. In addition, the wall may incorporate a head-of-wall joint system constructed as specified in the HW Series Joint Systems in the UL Fire Resistance Directory. The wall shall include the following construction features:

A. **Steel Floor and Ceiling Runners** — Floor runner U-shaped, sized to accommodate steel studs (Item 2B), fabricated from min 24 ga galv steel. Runners attached to floor with steel fasteners located not greater than 2 in. from ends and not greater than 24 in OC. Flange height of ceiling runners shall be min 1/4 in. (6 mm) greater than max extended joint width. The ceiling runners are provided with a fill, void or cavity material and are described in Item 3.

A1. **Light Gauge Framing* - Slotted Ceiling Track** — (Not Shown) - As an alternate to 2A, a ceiling track consisting of galv steel channel with slotted flanges sized to accommodate steel "C-T", "I", or "C-H" studs (Item 2C). Attached to steel deck with steel fasteners or welds spaced max 24 in. (610 mm) OC.

B. **Studs** — "C-H", "E" (back-to-back) or "C-T" - shaped studs, min 2-1/2 in. (64 mm) deep, fabricated from min 25 MSG galv steel. Cut to lengths 3/8 to 1/2 in. (10 to 13 mm) less than floor-to-ceiling height and spaced 24 in. (610 mm) OC.

C. **Gypsum Board*** — 1 in. (25 mm) thick gypsum liner panels and 1/2 in., 5/8 in. or 3/4 in. (13, 16 or 19 mm) thick gypsum panels installed as specified in the individual U400 or V400 Series shaft wall designs in the UL Fire Resistance Directory.

The hourly ratings of the joint system are equal to the hourly fire rating of the wall.

3. Fill, Void, or Cavity Material* Sealant — Max separation between top of floor and bottom of gypsum board is 1/2 in. (13 mm). Min 1/2 in. (13 mm) thickness Seal of fill material installed on finish side of the wall between the bottom of the gypsum board and the top of the concrete floor.

UNITED STATES GYPSUM CO — Type A or AS

A. **Fill, Void, or Cavity Material *** — As an option to Item 3; Nom 20 ga J-shaped track having a one 1-1/2 in. (38 mm) solid leg and one 2-1/2 in. (64 mm) leg nom 1/2 in. (13 mm) wide intumescent strip affixed to the top outer web along the outside corner facing the finish side of the wall. Track to be attached to the concrete wall with steel masonry or powder actuated fasteners spaced at a max of 24 in. (610 mm) OC.

CALIFORNIA EXPANDED METAL PRODUCTS CO — Fire Rated J -Track

UNITED STATES GYPSUM CO — USG Sheetrock® Brand Firecode® J-Runner

MARINO/WARE, DIV OF WARE INDUSTRIES INC — Fire Rated J-Track

*** Indicates such products shall bear the UL or cUL Certification Mark for jurisdictions employing the UL or cUL Certification (such as Canada), respectively.**

Last Updated on 2019-11-07

The appearance of a company's name or product in this database does not in itself assure that products so identified have been manufactured under UL's Follow-Up Service. Only those products bearing the UL Mark should be considered to be Certified and covered under UL's Follow-Up Service. Always look for the Mark on the product.

UL permits the reproduction of the material contained in the Online Certification Directory subject to the following conditions: 1. The Guide Information, Assemblies, Constructions, Designs, Systems, and/or Certifications (files) must be presented in their entirety and in a non-misleading manner, without any manipulation of the data (or drawings). 2. The statement "Reprinted from the Online Certifications Directory with permission from UL" must appear adjacent to the extracted material. In addition, the reprinted material must include a copyright notice in the following format: "© 2020 UL LLC"