

BXUV.U494 - Fire-resistance Ratings - ANSI/UL 263

Design/System/Construction/Assembly Usage Disclaimer

- Authorities Having Jurisdiction should be consulted in all cases as to the particular requirements covering the installation and use of UL Certified products, equipment, system, devices, and materials.
- Authorities Having Jurisdiction should be consulted before construction.
- Fire resistance assemblies and products are developed by the design submitter and have been investigated by UL for compliance with applicable requirements. The published information cannot always address every construction nuance encountered in the field.
- When field issues arise, it is recommended the first contact for assistance be the technical service staff provided by the product manufacturer noted for the design. Users of fire resistance assemblies are advised to consult the general Guide Information for each product category and each group of assemblies. The Guide Information includes specifics concerning alternate materials and alternate methods of construction.
- Only products which bear UL's Mark are considered Certified.

Fire-resistance Ratings - ANSI/UL 263

BXUV - Fire Resistance Ratings - ANSI/UL 263 Certified for United States
 BXUV7 - Fire Resistance Ratings - CAN/ULC-S101 Certified for Canada

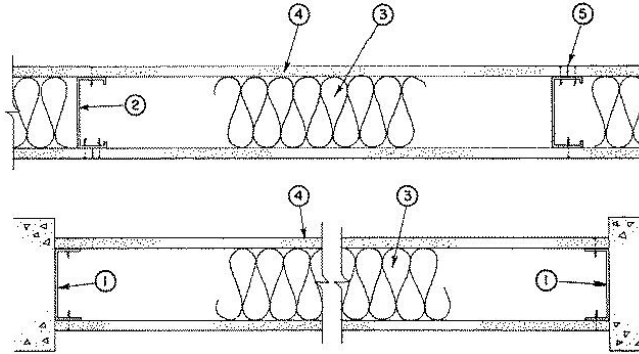
[See General Information for Fire-resistance Ratings - ANSI/UL 263 Certified for United States](#)
[Design Criteria and Allowable Variances](#)

[See General Information for Fire Resistance Ratings - CAN/ULC-S101 Certified for Canada](#)
[Design Criteria and Allowable Variances](#)

Design No. **U494**

March 2, 2022

Nonbearing Wall Rating — 1 HR.
 * Indicates such products shall bear the UL or cUL Certification Mark for jurisdictions employing the UL or cUL Certification (such as Canada), respectively.



1. Floor and Ceiling Runners — Channel-shaped runners, min 2-1/2 in. wide by 1 in. deep, fabricated from 25 MSG galv steel. Attached to floor and ceiling with fasteners.

1A. Framing Members* — Floor and Ceiling Runner — Not Shown — In lieu of Item 1 — For use with Item 2A, proprietary channel shaped runners, 1-1/4 in. deep by min 2-1/2 in. wide fabricated from min 0.018 in. thick galv steel, attached to floor and ceiling with fasteners spaced 24 in. OC max.

CALIFORNIA EXPANDED METAL PRODUCTS CO — Viper20™ Track

MARINO/WARE, DIV OF WARE INDUSTRIES INC — Viper20™ Track

IMPERIAL MANUFACTURING GROUP INC — Viper20™ Track

1B. Framing Members* — Floor and Ceiling Runners — Not Shown — In lieu of Item 1 — For use with Item 2B, channel shaped runners, 1-1/4 in. deep by min 2-1/2 in. wide fabricated from min 0.018 in. thick galv steel, attached to floor and ceiling with fasteners spaced 24 in. OC max.

CLARKDIETRICH BUILDING SYSTEMS — CD ProTRAK

DMFCWBS L L C — ProTRAK

MBA METAL FRAMING — ProTRAK

RAM SALES L L C — Ram ProTRAK

STEEL STRUCTURAL PRODUCTS L L C — Tri-S ProTRAK

1C. Framing Members* — Floor and Ceiling Runner — Not Shown — In lieu of Item 1 — For use with Item 2C, proprietary channel shaped runners, 1-1/4 in. deep by min 2-1/2 in. wide fabricated from min 0.018 in. thick galv steel, attached to floor and ceiling with fasteners spaced 24 in. OC max.

MARINO/WARE, DIV OF WARE INDUSTRIES INC — Viper20™ Track

1D. Framing Members* — Floor and Ceiling Runners — Not Shown — In lieu of Item 1 — For use with Item 2D, channel shaped runners, 1-1/4 in. deep by min 2-1/2 in. wide fabricated from min 0.018 in. thick galv steel, attached to floor and ceiling with fasteners spaced 24 in. OC max.

TELLING INDUSTRIES L L C — TRUE-TRACK™

1E. Framing Members* — Floor and Ceiling Runners — Not Shown — In lieu of Item 1 — For use with Item 2E, channel shaped runners, 1-1/4 in. deep by min 3-1/2 in. wide fabricated from min 0.018 in. thick galv steel, attached to floor and ceiling with fasteners spaced 24 in. OC max.

RESCUE METAL FRAMING, L L C — AlphaTRAK

2. Studs — Channel-shaped, min 2-1/2 in. wide by 1-1/4 in. deep with 5/16 in. folded back return. Fabricated from 25 MSG galv steel. Spaced 16 or 24 in. OC. Length of studs to be 1 in. less than assembly height.

2A. Framing Members* — Steel Studs — Not Shown — In lieu of Item 2 — For use with Item 1A, proprietary channel shaped steel studs, 1-1/4 in. deep by min 2-1/2 in. wide fabricated from min 0.018 in. thick galv steel. Spaced max 24 in. OC. Studs cut 1 in. less in length than assembly height.

CALIFORNIA EXPANDED METAL PRODUCTS CO — Viper20™

MARINO/WARE, DIV OF WARE INDUSTRIES INC — Viper20™

IMPERIAL MANUFACTURING GROUP INC — Viper20™

2B. Framing Members* — Steel Studs — Not Shown — In lieu of Item 2 — For use with Item 1B, channel shaped steel studs, 1-1/4 in. deep by min 2-1/2 in. wide fabricated from min 0.018 in. thick galv steel, spaced max 24 in. OC. Studs cut 1 in. less in length than assembly height.

CLARKDIETRICH BUILDING SYSTEMS — CD ProSTUD

DMFCWBS L L C — ProSTUD

MBA METAL FRAMING — ProSTUD

RAM SALES L L C — Ram ProSTUD

STEEL STRUCTURAL PRODUCTS L L C — Tri-S ProSTUD

2C. Framing Members* — Steel Studs — Not Shown — In lieu of Item 2 — For use with Item 1C, proprietary channel shaped steel studs, 1-1/4 in. deep by min 2-1/2 in. wide fabricated from min 0.018 in. thick galv steel. Spaced max 24 in. OC. Studs cut 1 in. less in length than assembly height.

MARINO/WARE, DIV OF WARE INDUSTRIES INC — Viper20™

2D. Framing Members* — Steel Studs — Not Shown — In lieu of Item 2 — For use with Item 1D, channel shaped steel studs, 1-1/4 in. deep by min 2-1/2 in. wide fabricated from min 0.018 in. thick galv steel, spaced max 24 in. OC. Studs cut 1 in. less in length than assembly height.

TELLING INDUSTRIES L L C — TRUE-STUD™

2E. Framing Members* — Steel Studs — As an alternate to Item 2 — For use with Item 1A (3-5/8 in. wide track), channel shaped studs, fabricated from min 25 MSG corrosion-protected steel, 1-1/4 in. wide by 3-5/8 in. deep, spaced a max of 24 in. OC. Studs to be cut 3/8 to 3/4 in. less than assembly height.

MARINO/WARE, DIV OF WARE INDUSTRIES INC — StudRite™

2F. Framing Members* — Steel Studs — Not Shown — In lieu of Item 2 — For use with Item 1E, channel shaped steel studs, 1-1/4 in. deep by min 3-1/2 in. wide fabricated from min 0.018 in. thick galv steel, spaced max 24 in. OC. Studs cut 1 in. less in length than assembly height.

RESCUE METAL FRAMING, L L C — AlphaSTUD

3. Batts and Blankets* — Nom 2-1/2 in. thick glass fiber or mineral wool batts supplied in 16 or 24 in. widths, installed to fill interior of stud cavities and friction held.

JOHNS MANVILLE

OWENS CORNING

ROCKWOOL — Type AFB, min. density 1.69 pcf / 27.0 kg/m³

4. **Gypsum Board*** — Any 5/8 in. thick UL Classified Gypsum Board that is eligible for use in Design Nos. L501, G512 or U305. Nom 5/8 in. thick, 4 ft wide, applied vertically, attached to steel studs on both sides and floor and ceiling runners with 0.127 in. diam self-drilling, self-tapping steel screws, 1 in. long, spaced 8 in. O.C. along edges of boards and 12 in. O.C. in the field of the boards. Joints centered over studs and staggered on opposite sides of the assembly.

AMERICAN GYPSUM CO ([View Classification](#)) — CKNXR14196

BEIJING NEW BUILDING MATERIALS PUBLIC LTD CO ([View Classification](#)) — CKNXR19374

CABOT MANUFACTURING ULC ([View Classification](#)) — CKNXR25370

CERTAINTEEED GYPSUM INC ([View Classification](#)) — CKNXR3660

CGC INC ([View Classification](#)) — CKNXR19751

CERTAINTEEED GYPSUM INC ([View Classification](#)) — CKNXR18482

GEORGIA-PACIFIC GYPSUM L L C ([View Classification](#)) — CKNXR2717

LOADMASTER SYSTEMS INC ([View Classification](#)) — CKNXR11809

NATIONAL GYPSUM CO ([View Classification](#)) — CKNXR3501

PABCO BUILDING PRODUCTS L L C, DBA PABCO GYPSUM ([View Classification](#)) — CKNXR7094

PANEL REY S A ([View Classification](#)) — CKNXR21796

SAINT-GOBAIN GYPROC MIDDLE EAST FZE ([View Classification](#)) — CKNXR27321

SIAM GYPSUM INDUSTRY (SARABURI) CO LTD ([View Classification](#)) — CKNXR19262

THAI GYPSUM PRODUCTS PCL ([View Classification](#)) — CKNXR27517

THE SIAM GYPSUM INDUSTRY (SONGKHLA) CO ([View Classification](#)) — CKNXR40305

UNITED STATES GYPSUM CO ([View Classification](#)) — CKNXR1319

USG BORAL DRYWALL SFZ LLC ([View Classification](#)) — CKNXR38438

USG MEXICO S A DE C V ([View Classification](#)) — CKNXR16089

4A. **Wall and Partition Facings and Accessories*** — (As an alternate to Items 4 through 4A) — Nominal 5/8 in. thick, 4 ft wide panels, applied vertically and secured as described in Item 4.
PABCO BUILDING PRODUCTS L L C, DBA PABCO GYPSUM — Type QuietRock ES.

4B. **Wall and Partition Facings and Accessories*** — (As an alternate to Items 4 through 4A) — Nominal 5/8 in. thick, 4 ft wide panels, applied vertically and secured as described in Item 4.
PABCO BUILDING PRODUCTS L L C, DBA PABCO GYPSUM — Type QuietRock 527.

4C. **Gypsum Board*** — (As an alternate to 5/8 in. Type FSW in Item 4) - 2 layers nom. 5/16 in. thick gypsum panels applied vertically. Horizontal joints on the same side need not be staggered. Inner layer attached with fasteners, as described in item 4, spaced 24 in. OC. Outer layer attached per Item 4.
NATIONAL GYPSUM CO — Type FSW

5. **Joint Tape and Compound** — Vinyl-based powder or premixed joint compound, applied in two coats to joints and screw heads; paper tape 2 in. wide, embedded in first layer of compound over all joints.

6. **Barrier Mesh** — (Optional, Not Shown) - Attached to steel studs on one or both sides of the wall using Barrier Mesh Clips spaced at maximum 12 inches on center vertically, using a flat head type screw penetrating through the steel at least 3/8 of an inch. For Steel Studs less than 0.033 inches in thickness, use self-piercing screws. For Steel Studs equal to or greater than 0.033 inches in thickness, use steel drill screws (self-tapping). Gypsum Board (Item 4) to be installed directly over the Barrier Mesh using prescribed screw patterns with lengths increased by a minimum 1/8 in. Barrier Mesh may be installed with the long dimension of the diamond pattern positioned vertically or horizontally. Barrier Mesh joints may occur as butt joints at the framing members and secured using the Barrier Mesh Clips or occur in between framing members as overlapping joints secured using 18 SWG wire ties spaced a maximum 12 in. on center.
CLARKDIETRICH BUILDING SYSTEMS — Barrier Mesh, Barrier Mesh Clips

* Indicates such products shall bear the UL or cUL Certification Mark for jurisdictions employing the UL or cUL Certification (such as Canada), respectively.

Last Updated on 2022-03-02

The appearance of a company's name or product in this database does not in itself assure that products so identified have been manufactured under UL's Follow-Up Service. Only those products bearing the UL Mark should be considered to be Certified and covered under UL's Follow-Up Service. Always look for the Mark on the product.

UL permits the reproduction of the material contained in the Online Certification Directory subject to the following conditions: 1. The Guide Information, Assemblies, Constructions, Designs, Systems, and/or Certifications (files) must be presented in their entirety and in a non-misleading manner, without any manipulation of the data (or drawings). 2. The statement "Reprinted from the Online Certifications Directory with permission from UL" must appear adjacent to the extracted material. In addition, the reprinted material must include a copyright notice in the following format: "© 2022 UL LLC"