



Expanding Your Solutions

Corporate Headquarters
13191 Crossroads Pkwy N., Ste 325
City of Industry, CA 91746
Phone: 800.775.2362
Fax: 626.330.7598

Manufacturing Facilities
City of Industry, CA
Denver, CO
Ft. Worth, TX
Pittsburg, CA

Structural Engineering/Design
1001-A Pittsburgh Antioch Hwy
Pittsburg, CA 94565
Phone: 800.775.2362
Fax: 626.330.7598

Technical Services
13191 Crossroads Pkwy N., Ste 325
City of Industry, CA 91746
Phone: 800.416.2278
Fax: 626.249.5004

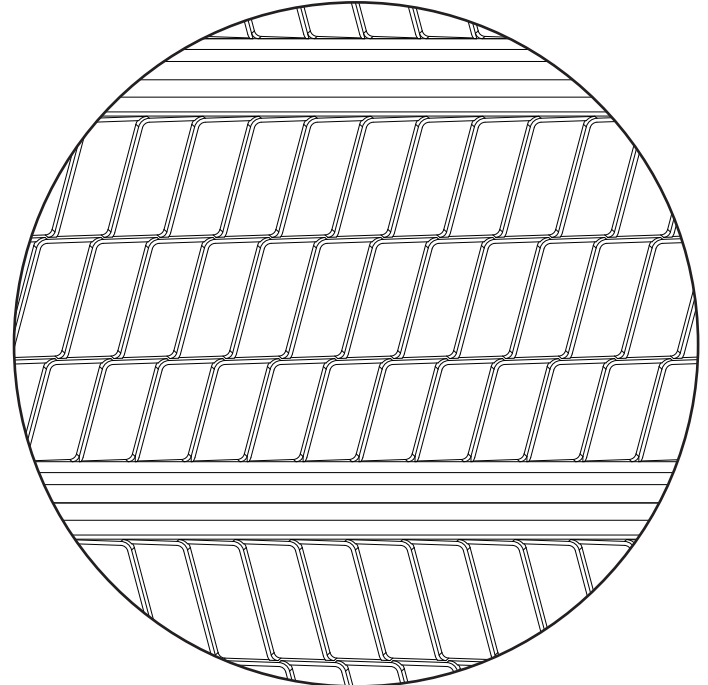
1/8" SELF-FURRED RIB LATH (WITHOUT PAPER)

Introduction

CEMCO's CEMMESH Flat-Rib without K-Paper is a more rigid lath with 1/8" longitudinal ribs spaced at 3" on-center that provide for wider spacing between wooden or metal supports. Small openings provide for great keying of plaster. G90 is available upon special request.

Packaging

Length	Spacing	Weight/ Sq. Yd. (lbs.)	Sheet Size	Pieces/ Bundle	Yards/ Bundle	Yards/ Pallet
4'	16"	2.00	27" x 48"	10	10	500
8'	24"	2.00	27" x 96"	10	20	1000



DETAIL

ASTM's & Code Standards

- ASTM A653
- ASTM C841 (Installation)
- ASTM C847
- ASTM A924
- ASTM C1063 (Installation)
- ICC ESR-1623
- Fed. Spec. QQ-1-101C
- ANSI A42.3, ANSI A42.4
- U.S. HUD 4930.1

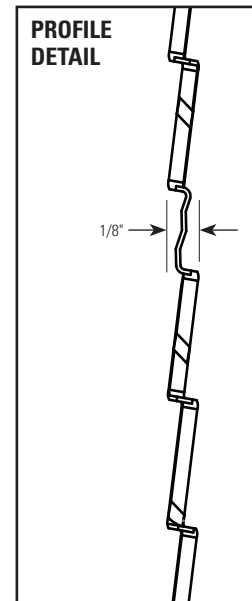
LEED Points and Recycled Content

By using CEMCO metal lath products, your project can contribute to earning points for:

- LEED Credit MR 4.1/4.2 – Recycled Content Requirements (Applies for all projects)
- LEED Credit MR 5.1/5.2 – Requirements (Applies for all projects)

CEMCO cold-formed steel framing products contain 30% to 35% recycled steel.

- Total Recycled Content: 35%
- Post-Consumer: 19.8%
- Pre-Consumer: 14.4%



Technical Services

Technical Services: 800.416.2278
Structural Engineering/Design: 925.473.9340
www.cemcosteel.com



This technical information reflects the most current information available and supersedes any and all previous publications effective June 20, 2017.

06-20-17 AT