

CEMENT PLASTER

SELF-FURRED EXPANDED METAL LATH

WATER RESISTANCE BARRIER

SELF-ADHERED FLASHING

WALL SHEATHING

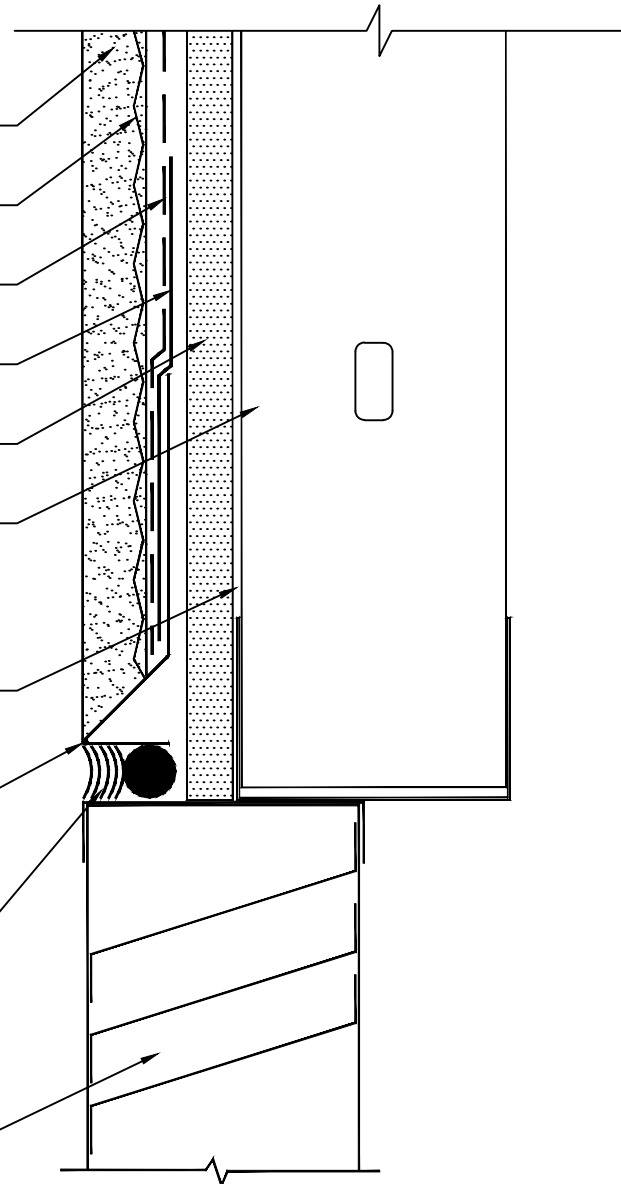
METAL STUD

METAL TRACK

CEMCO #6 DRIP SCREED

CONTINUOUS SEALANT & BACKER ROD

VENT/LOVVER



#6 DRIP SCREED INSTALLATION RECOMMENDATION

DISCLAIMER:

CEMCO assumes no liability for failure resulting from the use of it's drawings, computations, or for failure resulting from the use of alternate materials, or improper application or installation. This drawing is supplied solely to assist in the selection and application of CEMCO products. This drawing is generic in nature and should not be used in design or construction without an independent evaluation by a qualified Architect or Engineer of Record. All warranties of any kind, express or implied, including but not limited to the implied warranties of merchantability and fitness for a particular purpose are disclaimed.

DRAWN BY: T. GARIBEKIAN  
DATE: 08/05/2015

APPROVED BY: DON PILZ  
DATE: 08/05/2015

SCALE: 3" = 1'-0"

INSTALLATION ASSEMBLY

DETAIL NUMBER:

02



WWW.CEMCOSTEEL.COM

263 N. Covina Lane.  
City of Industry, CA 91744  
PHONE (800) 775-2362  
ENG. DEPT.  
FAX (626) 369-7243  
WWW.CEMCOSTEEL.COM